



## Data Report: March 2025 (showing data to the end of February 2025)

This report provides data on Foodbank use up to the previous month.

### Key messages from the data:

- From 1 July we have no longer operated a distribution point in Burntisland. Until that date, around 10% of our monthly visits were to Burntisland.
- From January 2025, we have provided each person with one parcel per week and stopped providing extras if someone visited a 2<sup>nd</sup> time in the week. We have also started asking people to provide confirmation of their address and of the number in their household.
- In January we had 35% less visits than in January 2024, and in February we have 25% less visits than in February last year. Overall, the number of visits in the first 2 months has been 30% less than last year. Graph 1 shows that January and February this year have had the lowest number of visits than any month in the last 6 years.
- Some of the reduction is due to us no longer operating in Burntisland. It is always difficult to know why people are no longer visiting the foodbank. However, the increased level of support available from agencies based in our centres is very likely to have led to many people no longer requiring our help.
- The proportion of family sized parcels given out in January and February reduced significantly. This is likely explained by the change in practice in asking people to confirm the number in their household (see TABLE 2 on page 3). Alongside that, the proportion of parcels for single people has increased – now over 60% of all parcels given out. These changes in the kind of parcels given out is clearly shown on GRAPH 2.
- TABLE 3 shows that the proportion of people receiving food from us who are children is now 24%. This is lower than in the past and reflects the reducing proportion of family sized parcels. GRAPH 3 shows that the proportion of children receiving food is still different in each of our 3 distribution points – highest at Linton Lane and lowest at New Volunteer House.
- TABLE 4 shows that, with our centre at Burntisland closed, the Park Road Centre has had 45% of our visits this year.
- GRAPH 5 on page 7 shows that the types of parcel given out continues to be different at Linton Lane. Although it is now similar to New Volunteer House and Park Road in that single parcels are the most common, a higher proportion of family sized parcels is given out at Linton Lane.

Registered Charity (SCIO) SCO44 446 Web: [www.kirkcaldyfoodbankcharity.org.uk](http://www.kirkcaldyfoodbankcharity.org.uk)

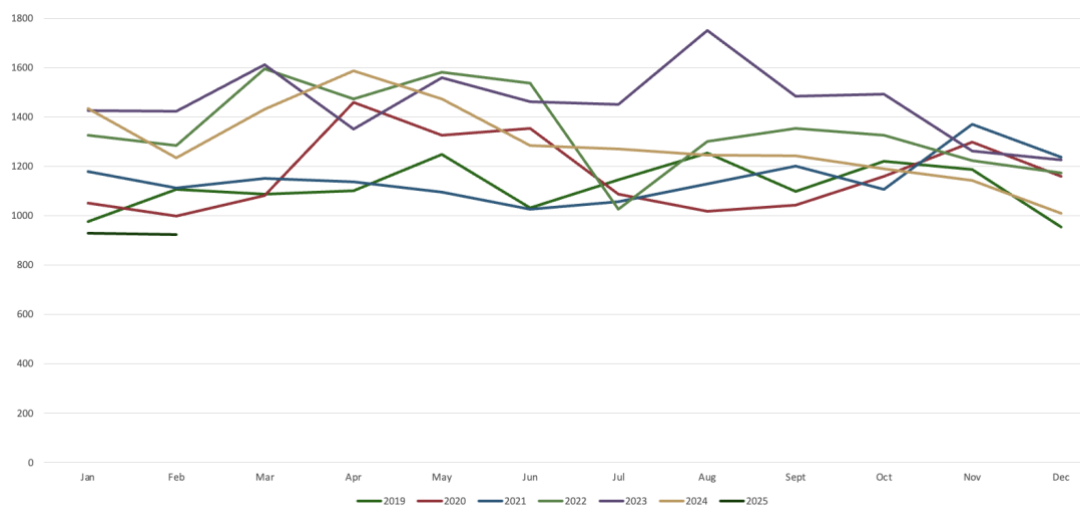
email: [comms@kirkcaldyfoodbankcharity.org.uk](mailto:comms@kirkcaldyfoodbankcharity.org.uk)

# NUMBER OF VISITS TO THE FOODBANK

**TABLE 1:** table showing number of visits (not including visits for extras only) —and the change from the same month in the previous year as a percentage

	2023	2024	2025	% change 2024 - 2025
Jan	1427	1434	929	-35.2%
Feb	1424	1235	924	-25.2%
Mar	1612	1431		
Apr	1352	1587		
May	1559	1475		
Jun	1462	1286		
Jul	1452	1270		
Aug	1752	1247		
Sept	1485	1242		
Oct	1492	1191		
Nov	1262	1144		
Dec	1228	1009		

**GRAPH 1:** Graph showing year on year comparison of the number of visits (not including those for extras only)



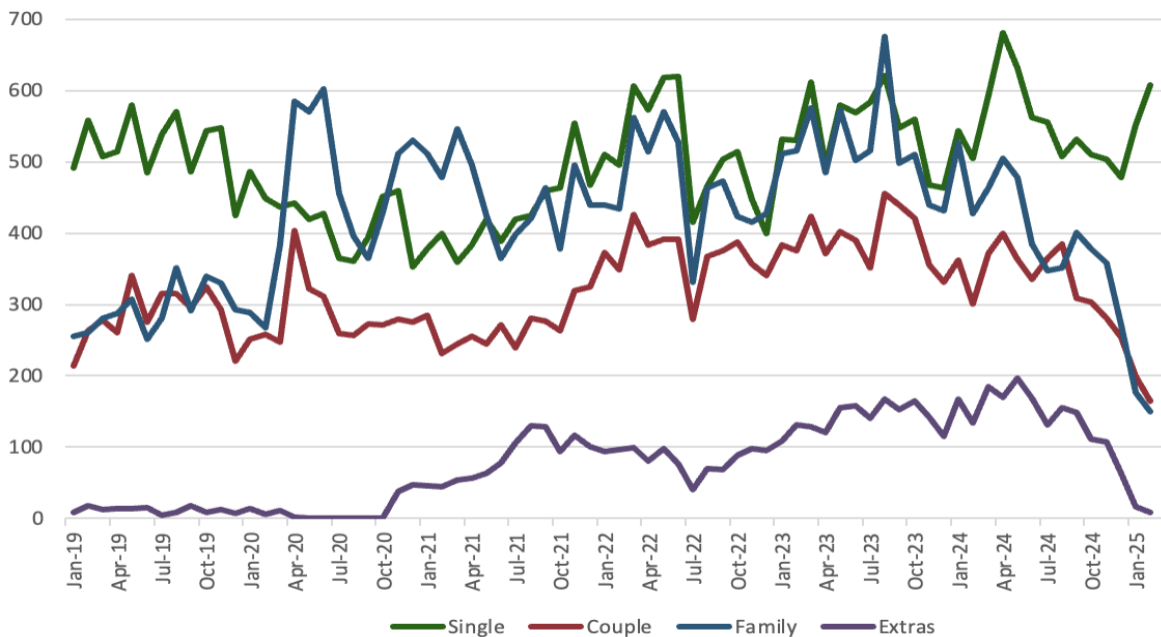
## DIFFERENT PARCEL SIZES DISTRIBUTED

TABLE 2: table showing data from this and previous year on:

- the number of different parcel sizes given out (including extras)
- the percentage change from the previous year in the number of meals provided
- the proportion of single parcels and the proportion of family parcels.

month	Single	Couple	Family	Single + Couple	Extras	total number of visits (incl extras)	proportion of singles	proportion of family
Jan-24	544	362	526	2	167	1601	37.9%	36.7%
Feb-24	505	301	428	1	134	1369	40.9%	34.7%
Mar-24	593	371	464	3	185	1616	41.4%	32.4%
Apr-24	681	399	505	2	170	1757	42.9%	31.8%
May-24	631	364	478	2	197	1672	42.8%	32.4%
Jun-24	562	335	385	4	169	1455	43.7%	29.9%
Jul-24	556	365	347	2	131	1401	43.8%	27.3%
Aug-24	508	385	352	2	155	1402	40.7%	28.2%
Sep-24	532	309	401	0	148	1390	42.8%	32.3%
Oct-24	510	303	378	0	111	1302	42.8%	31.7%
Nov-24	503	281	358	2	107	1251	44.0%	31.3%
Dec-24	478	254	271	6	63	1072	47.4%	26.9%
Jan-25	551	199	176	3	17	946	59.3%	18.9%
Feb-25	607	165	150	2	9	933	65.7%	16.2%

GRAPH 2: Graph showing the different parcel sizes given out: 2019 to date



Registered Charity (SCIO) SCO44 446 Web: [www.kirkcaldyfoodbankcharity.org.uk](http://www.kirkcaldyfoodbankcharity.org.uk)

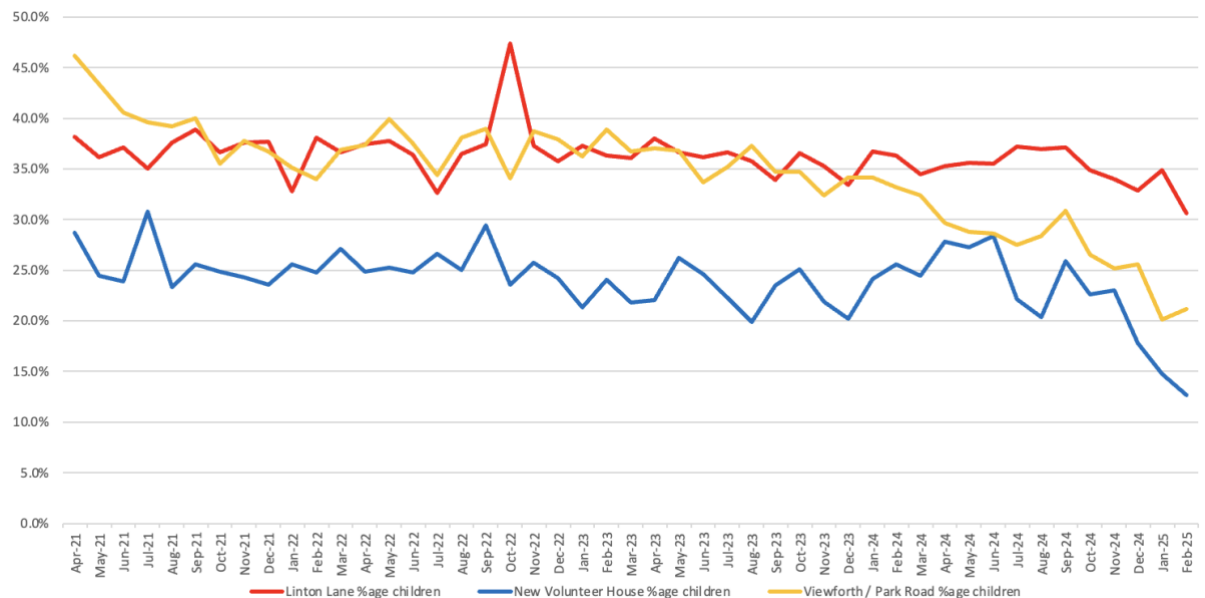
email: [comms@kirkcaldyfoodbankcharity.org.uk](mailto:comms@kirkcaldyfoodbankcharity.org.uk)

## CHILDREN RECEIVING OUR SUPPORT

	ADULTS	CHILDREN	%AGE CHILDREN
Jan-24	2476	1171	32.1%
Feb-24	2057	983	32.3%
Mar-24	2338	1020	30.4%
Apr-24	2598	1144	30.6%
May-24	2473	1070	30.2%
Jun-24	2110	937	30.8%
Jul-24	2021	845	29.5%
Aug-24	2271	1139	33.4%
Sep-24	2071	975	32.0%
Oct-24	1954	779	28.5%
Nov-24	1921	773	28.7%
Dec-24	1572	568	26.5%
Jan-25	1269	409	24.4%
Feb-25	1189	359	23.2%
<b>TOTAL %AGE CHILDREN IN 2025</b>			<b>23.8%</b>

**TABLE 3:** Table showing the total number of adults and children provided with food and the percentage of children in the past 12 months *NB: as the adults and children may be provided with food more than once in the month, this is not a count of the total number of individual adults and children we have helped.*

**GRAPH 3:** Graph showing the percentage of children being provided with food at each of our distribution points since April 2021

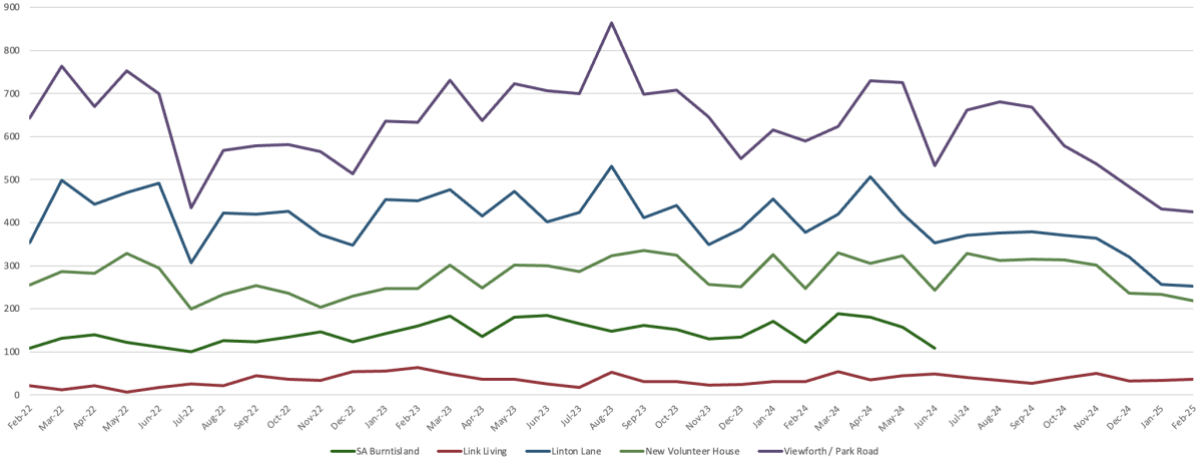


Registered Charity (SCIO) SCO44 446 Web: [www.kirkcaldyfoodbankcharity.org.uk](http://www.kirkcaldyfoodbankcharity.org.uk)

email: [comms@kirkcaldyfoodbankcharity.org.uk](mailto:comms@kirkcaldyfoodbankcharity.org.uk)

**DISTRIBUTION POINTS**

**GRAPH 4: Graph showing the number of visits to our distribution points since February 2022**

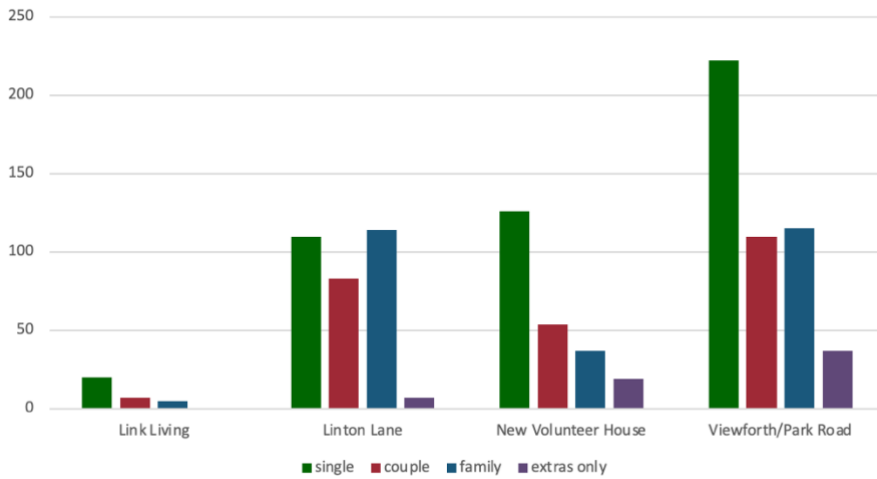


**TABLE 4: Table showing the percentage of our visits to our distribution points in the past 12 months**

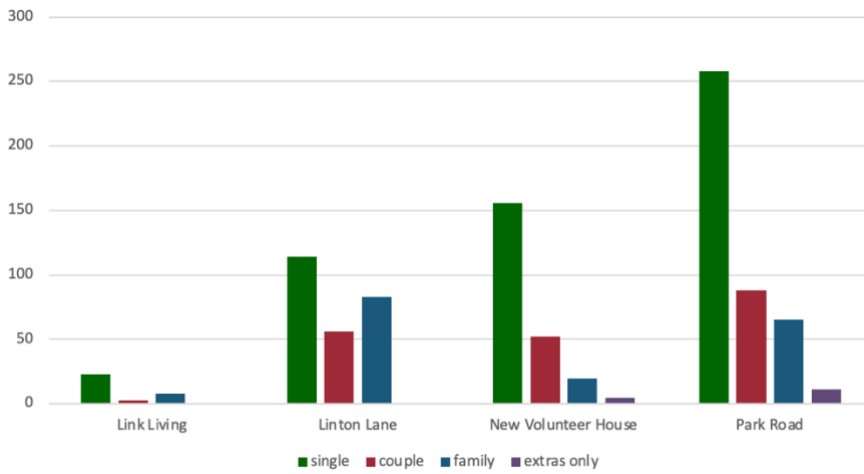
	<b>SA Burntisland</b>	<b>Link Living</b>	<b>Linton Lane</b>	<b>New Volunteer House</b>	<b>Viewforth / Park Road</b>
Jan-24	10.7%	1.9%	28.5%	20.4%	38.5%
Feb-24	8.9%	2.3%	27.6%	18.1%	43.1%
Mar-24	11.6%	3.3%	26.0%	20.4%	38.6%
Apr-24	10.2%	2.0%	28.8%	17.4%	41.5%
May-24	9.4%	2.7%	25.2%	19.3%	43.4%
Jun-24	8.5%	3.7%	27.4%	18.9%	41.4%
Jul-24	0.0%	2.9%	26.5%	23.4%	47.3%
Aug-24	0.0%	2.4%	26.8%	22.3%	48.6%
Sep-24	0.0%	1.9%	27.3%	22.7%	48.1%
Oct-24	0.0%	3.0%	28.5%	24.1%	44.4%
Nov-24	0.0%	4.0%	29.1%	24.1%	42.8%
Dec-24	0.0%	3.0%	29.9%	22.0%	45.1%
Jan-25	0.0%	3.6%	26.8%	24.5%	45.2%
Feb-25	0.0%	4.0%	27.0%	23.5%	45.6%
<b>TOTAL FOR 2025</b>	<b>0.0%</b>	<b>3.8%</b>	<b>26.9%</b>	<b>24.0%</b>	<b>45.4%</b>

**PARCEL SIZES AT OUR DISTRIBUTION POINTS**

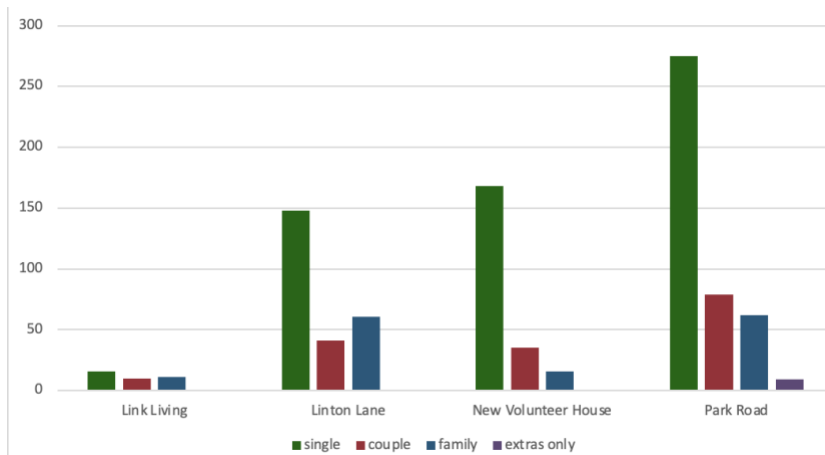
**GRAPH 5: Graphs showing parcel types provided from each of our distribution points in the last 3 months**



**December 2024**



**January 2025**



**February 2025**

Registered Charity (SCIO) SCO44 446 Web: [www.kirkcaldyfoodbankcharity.org.uk](http://www.kirkcaldyfoodbankcharity.org.uk)

email: [comms@kirkcaldyfoodbankcharity.org.uk](mailto:comms@kirkcaldyfoodbankcharity.org.uk)