



Data Report: July 2024

(showing data to the end of June 2024)

This report provides data on Foodbank use up to the previous month.

Key messages from the data:

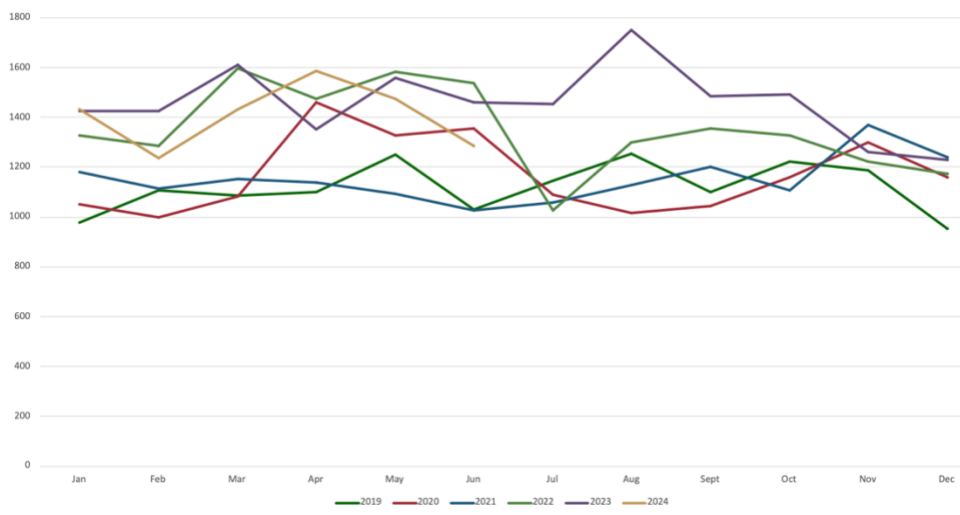
- Although April 2024 was our busiest April ever, in June we had 12% less visits than in 2023. In 4 of the 6 months in 2024 we have had less visits when compared to the corresponding month in 2023 (see TABLE 1 and the yellow line on GRAPH 1 on page 2). Over the first 6 months of 2024 we have had 4% less visits than in 2023. When visits for extras are included, the total number of visits in 2024 is 2% less than in the first 6 months of 2023.
- The proportion of family sized parcels given out has been lower than ever before in the months since February. In June less than 30% of our parcels were family sized (see TABLE 2 on page 3).
- GRAPH 4 on page 4 shows there was a decrease in all parcel sizes in June. Single parcels continue to be the most common parcel size we give out. That has been the case for every month other than August 2023.
- GRAPH 3 and TABLE 2 show the total number of meals we provide. As the number of family parcels has reduced, so the number of meals we provide has reduced. The number of meals we provided in June was 25% less than in June 2023. Over the first 6 months of 2024 we have provided 8% less meals than in the same months in 2023.
- TABLE 3 shows that the proportion of people receiving food from us who are children has been 31% in 2024. GRAPH 5 on page 5 shows that the proportion of people receiving food who are children is now very similar at both Viewforth and New Volunteer House. Linton Lane is now quite different in the proportion of children receiving food from us.
- TABLE 4 shows that 10.5% of our visits in 2024 have been to Burntisland. Viewforth continues to be the busiest with 40% of our visits (43% in May). Only 2.5% of our visits are to Link Living (clients require a referral form from an agency to get food there). GRAPH 6 shows that there was a decrease at all centres other than Link Living in June.
- GRAPH 7 on page 7 shows that the types of parcel given out is now particularly different at Linton Lane. It is the only centre at which family parcels is the most common size provided (this is also reflected in the proportion of children receiving food from us being higher at Linton Lane).

NUMBER OF VISITS TO THE FOODBANK

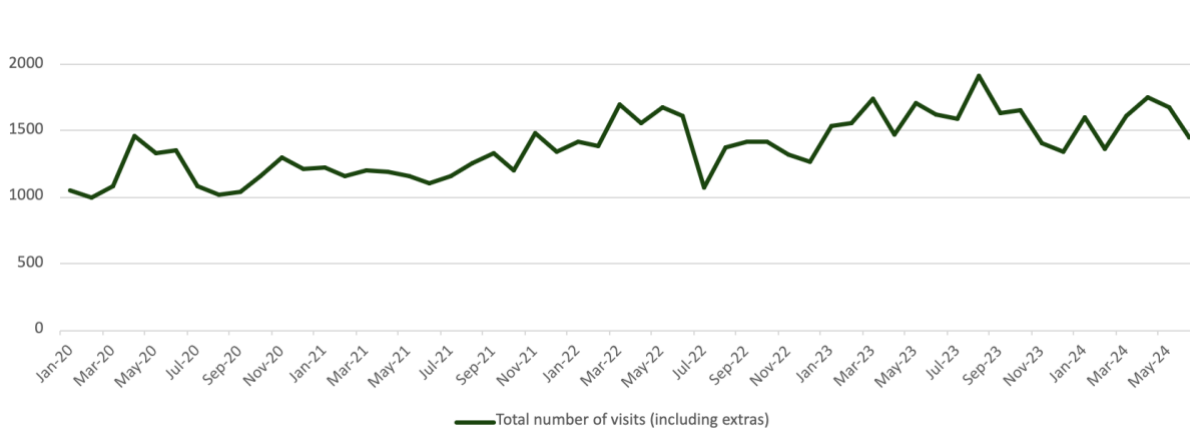
TABLE 1: table showing number of visits (not including visits for extras only) —and the change from the same month in the previous year as a percentage

	2023	2024	% change 2023 - 2024
Jan	1427	1434	0.5%
Feb	1424	1235	-13.3%
Mar	1612	1431	-11.2%
Apr	1352	1587	17.4%
May	1559	1475	-5.4%
Jun	1462	1286	-12.0%
Jul	1452		
Aug	1752		
Sept	1485		
Oct	1492		
Nov	1262		
Dec	1228		

GRAPH 1: Graph showing year on year comparison of the number of visits (not including those for extras only)



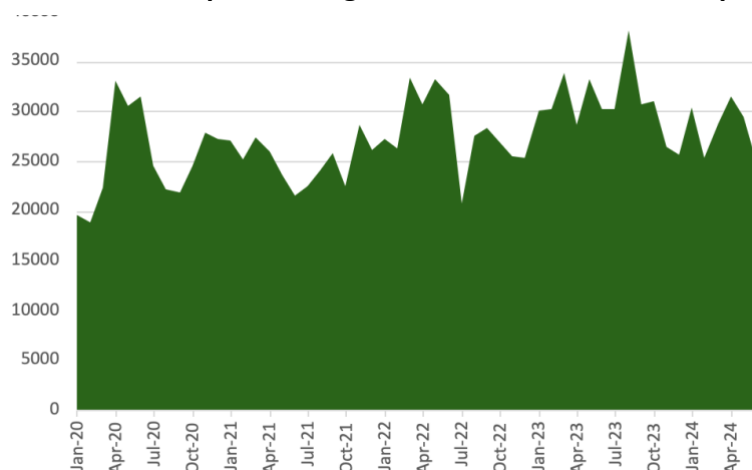
GRAPH 2: Graph showing number of visits (including those for extras only)



Registered Charity (SCIO) SCO44 446 Web: www.kirkcaldyfoodbank.org.uk email: kirkcaldyfoodbank@gmail.com

DIFFERENT PARCEL SIZES DISTRIBUTED AND THE NUMBER OF MEALS PROVIDED

GRAPH 3: Graph showing the total number of meals provided in 2020 to date



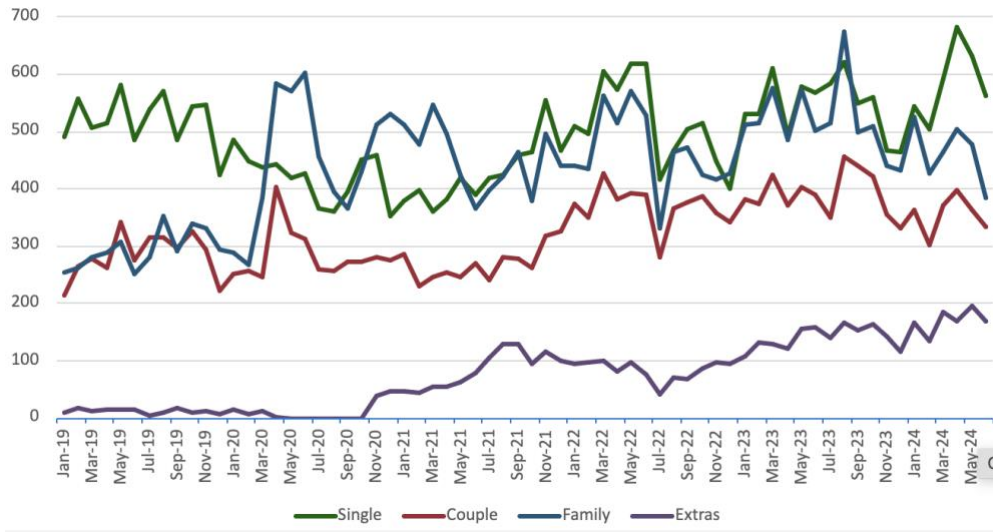
(NB the total number of meals figure is calculated by multiplying the number of parcels x size of parcel (single, couple or family etc) x 3 days x 3 meals a day. Therefore it is an indicative and not exact figure. As 'Extras only' means that a full parcel was not given on that visit, they have not been taken into account in calculating the total number of meals or people provided with food.)

TABLE 2: table showing data from this and previous year

- the number of different parcel sizes given out (including extras)
- the total number of meals provided (see methodology above)
- the percentage change from the previous year in the number of meals provided
- the proportion of single parcels and the proportion of family parcels.

month	Single	Couple	Family	Single + Couple	Extras	Total number of meals provided	total number of visits (incl extras)	proportion of singles	proportion of family
Jan-23	531	383	512	1	108	30132	1535	37.2%	35.9%
Feb-23	530	375	516	3	131	30177	1555	37.2%	36.2%
Mar-23	611	423	576	2	129	33903	1741	37.9%	35.7%
Apr-23	494	371	485	2	120	28638	1472	36.5%	35.9%
May-23	579	402	573	5	155	33210	1714	37.1%	36.8%
Jun-23	569	390	502	1	158	30240	1620	38.9%	34.3%
Jul-23	583	351	515	3	141	30186	1593	40.2%	35.5%
Aug-23	621	456	675	0	167	38097	1919	35.4%	38.5%
Sep-23	548	439	498	0	152	30762	1637	36.9%	33.5%
Oct-23	560	421	510	1	164	31005	1656	37.5%	34.2%
Nov-23	467	355	440	0	142	26433	1404	37.0%	34.9%
Dec-23	464	331	432	1	115	25713	1343	37.8%	35.2%
Jan-24	544	362	526	2	167	30402	1601	37.9%	36.7%
Feb-24	505	301	428	1	134	25398	1369	40.9%	34.7%
Mar-24	593	371	464	3	185	28800	1616	41.4%	32.4%
Apr-24	681	399	505	2	170	31545	1757	42.9%	31.8%
May-24	631	364	478	2	197	29493	1672	42.8%	32.4%
Jun-24	562	335	385	4	169	25056	1455	43.7%	29.9%

GRAPH 4: Graph showing the different parcel sizes given out: 2019 to date

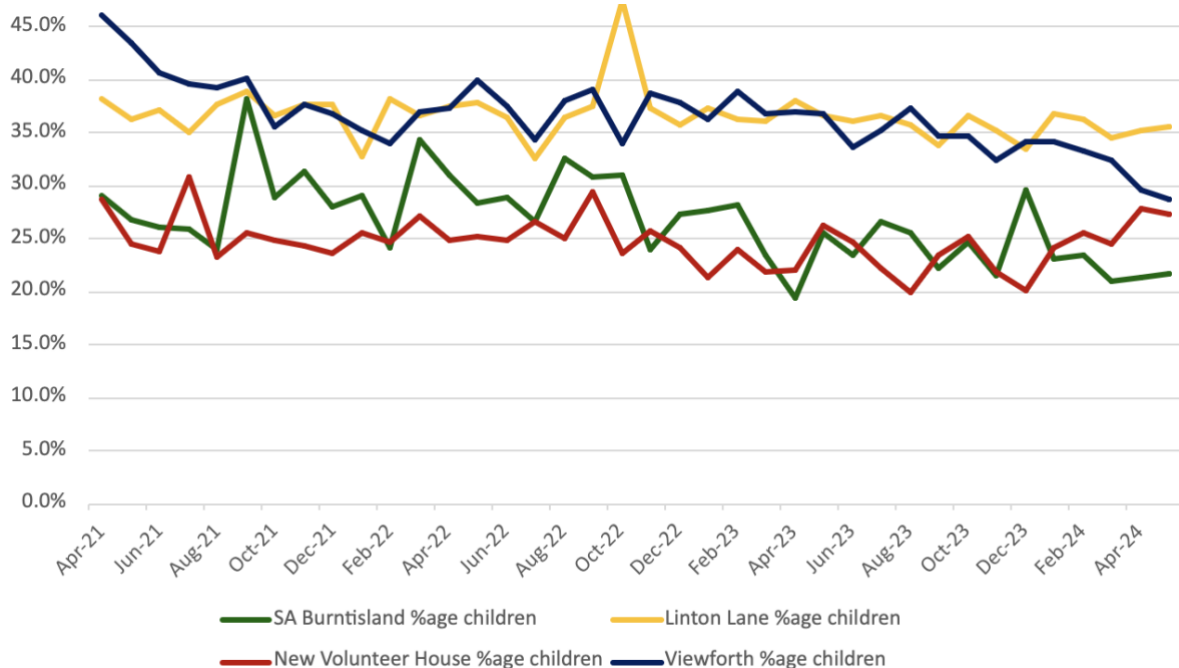


CHILDREN RECEIVING OUR SUPPORT

	ADULTS	CHILDREN	%AGE CHILDREN
Apr-21	1946	1283	39.7%
May-21	1858	1094	37.1%
Jun-21	1743	959	35.5%
Jul-21	1782	977	35.4%
Aug-21	1919	1082	36.1%
Sep-21	2053	1250	37.8%
Oct-21	1830	937	33.9%
Jun-23	2461	1209	32.9%
Jul-23	2441	1194	32.8%
Aug-23	2716	1389	33.8%
Sep-23	2501	1149	31.5%
Oct-23	2556	1240	32.7%
Nov-23	2192	985	31.0%
Dec-23	2109	963	31.3%
Jan-24	2476	1171	32.1%
Feb-24	2057	983	32.3%
Mar-24	2338	1020	30.4%
Apr-24	2598	1144	30.6%
May-24	2473	1070	30.2%
Jun-24	2110	937	30.8%
TOTAL %AGE CHILDREN IN 2024			31.1%

TABLE 3: Table showing the total number of adults and children provided with food and the percentage of children in the past 12 months *NB: as the adults and children may be provided with food more than once in the month, this is not a count of the total number of individual adults and children we have helped.*

GRAPH 5: Graph showing the percentage of children being provided with food at each of our distribution points since April 2021



Registered Charity (SCIO) SCO44 446 Web: www.kirkcaldyfoodbank.org.uk email: kirkcaldyfoodbank@gmail.com

DISTRIBUTION POINTS

GRAPH 6: Graph showing the number of visits to our distribution points since February 2022

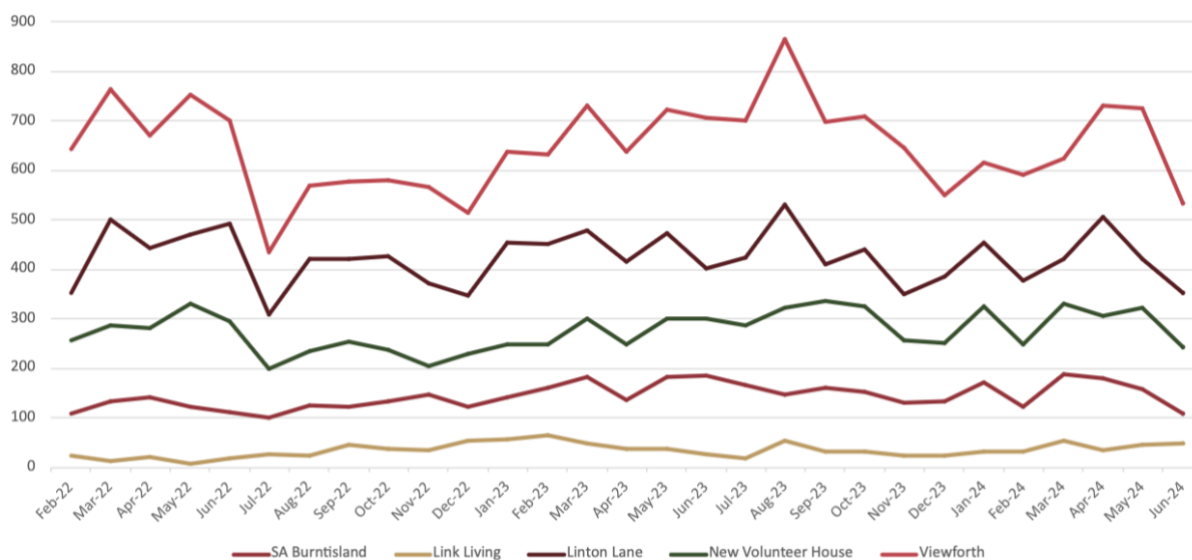
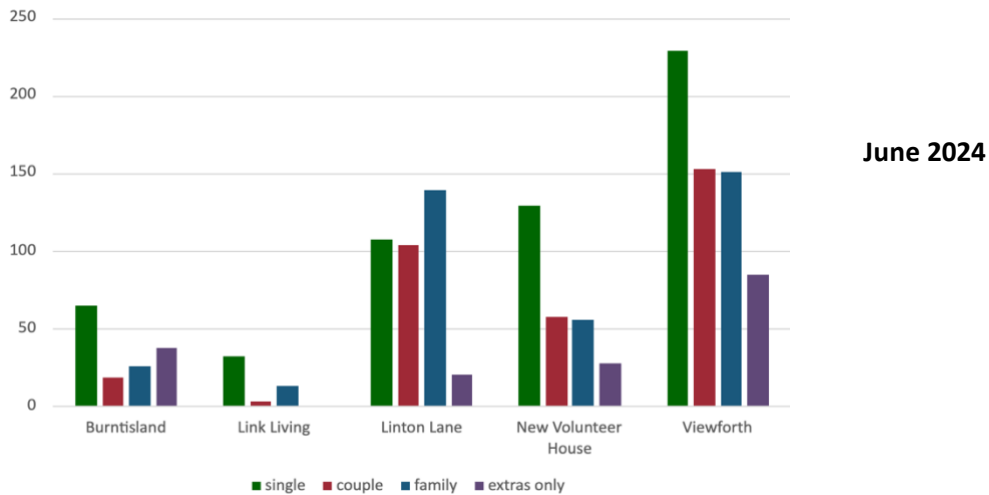
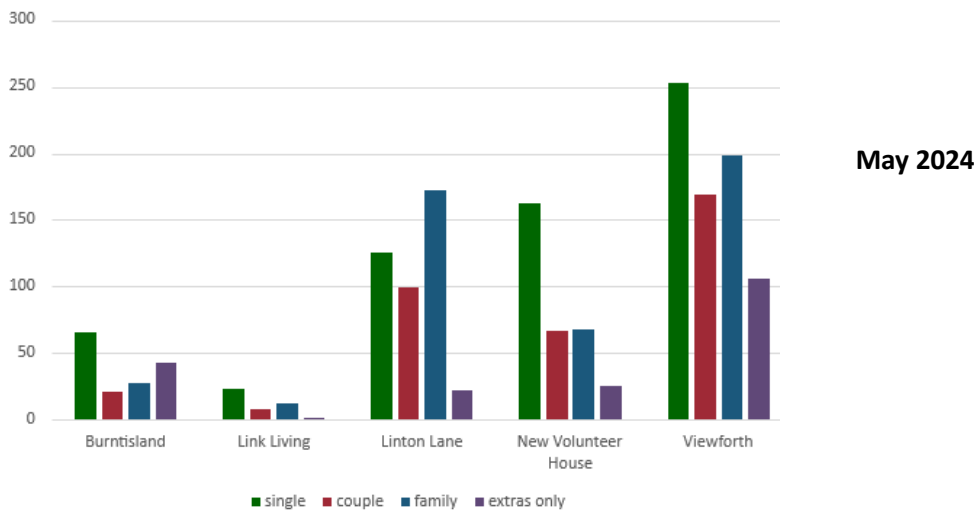
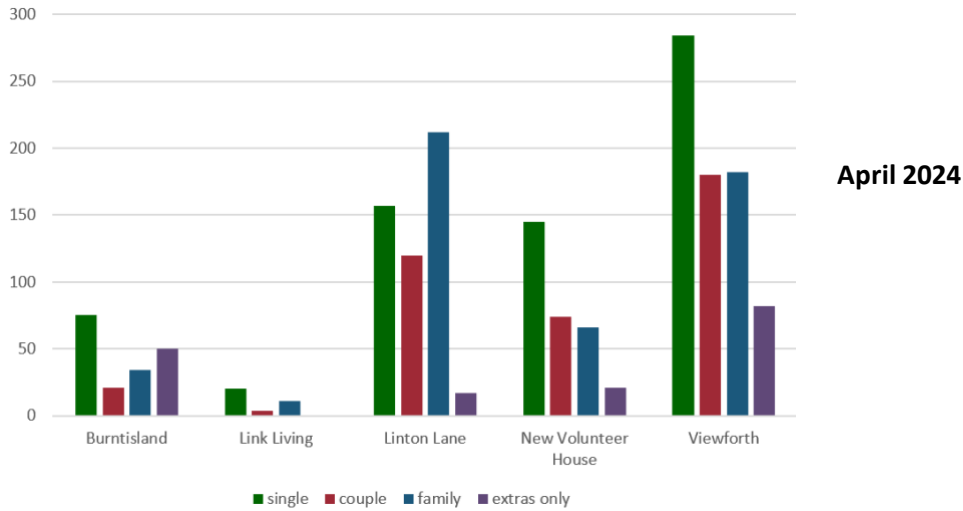


TABLE 4: Table showing the percentage of our visits to our distribution points in the past 12 months

	SA Burntisland	Link Living	Linton Lane	New Volunteer House	Viewforth
Jul-23	10.4%	1.1%	26.6%	18.0%	43.9%
Aug-23	7.7%	2.8%	27.7%	16.8%	45.0%
Sep-23	9.8%	1.9%	25.1%	20.5%	42.6%
Oct-23	9.2%	1.9%	26.6%	19.6%	42.8%
Nov-23	9.3%	1.6%	24.9%	18.3%	45.9%
Dec-23	10.0%	1.8%	28.7%	18.7%	40.9%
Jan-24	10.7%	1.9%	28.5%	20.4%	38.5%
Feb-24	8.9%	2.3%	27.6%	18.1%	43.1%
Mar-24	11.6%	3.3%	26.0%	20.4%	38.6%
Apr-24	10.2%	2.0%	28.8%	17.4%	41.5%
May-24	9.4%	2.7%	25.2%	19.3%	43.4%
Jun-24	8.5%	3.7%	27.4%	18.9%	41.4%
TOTAL FOR 2024	10.5%	2.5%	27.3%	19.7%	39.9%

PARCEL SIZES AT OUR DISTRIBUTION POINTS

GRAPH 7: Graphs showing parcel types provided from each of our distribution points in the last 3 months



Registered Charity (SCIO) SCO44 446 Web: www.kirkcaldyfoodbank.org.uk email: kirkcaldyfoodbank@gmail.com