



# Data Report: November 2023

(showing data to the end of October 2023)

This report provides data on Foodbank use up to the previous month.

## Key messages from the data:

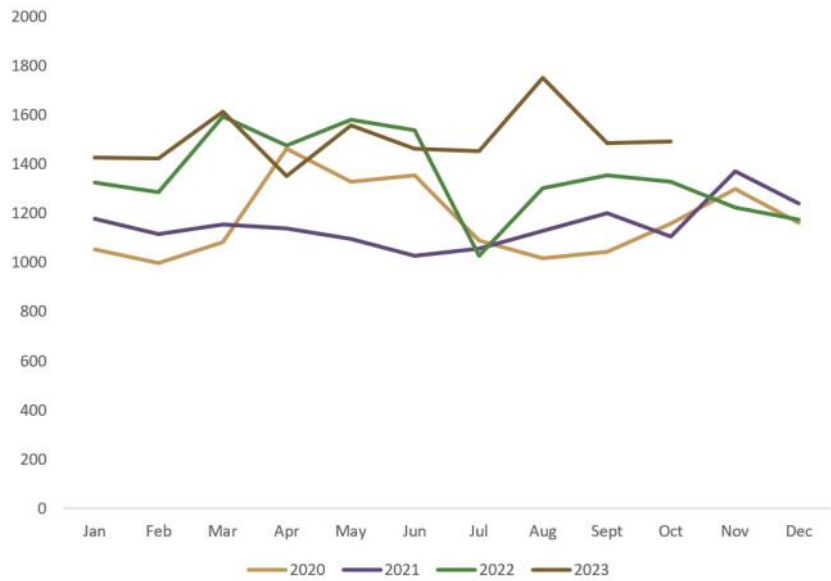
- August was our busiest month ever with 1752 visits (1919 if visits for extras are included). September and October were not as busy, but we still had just under 12% more visits in October than in October 2022. In those 3 months we had 19% more visits than in the same period last year.
- This figure is very similar to that reported by the Trussell Trust recently. Despite a much more restrictive approach than we have, they still reported a 16% increase in April to September compared to the same period in 2022 (in that same 6 month period we saw an 14% increase). Recent research published by the Joseph Rowntree Foundation said that, in 2022, the number of people who experienced destitution was nearly 2½ times the number that did so in 2017 (<https://www.jrf.org.uk/report/destitution-uk-2023>). So it should probably be no surprise that we and other foodbanks continue to see such increases.
- The middle graph on page 2 shows a clear upward trend in the number of visits, but also shows a fluctuation in numbers (both higher and lower) from month to month. The upward trend is despite the changes we made in July 2022.
- The graph on page 3 shows that there were particularly sharp increases in the number of family and couple parcels in August, with an equally sharp decrease in family parcels in September, and a slight increase in October (but not in couple parcels which decreased).
- The proportion of people receiving food from us who are children has seen a slight decrease over the last 12 month. However, it remains unacceptably high at 33% over 2023.
- The graph on page 4 shows that the proportion of people receiving food who are children continues to be remarkably similar at Viewforth and Linton Lane. The proportion is much lower at New Volunteer House and Burntisland.
- The graph on page 6 shows the number of different parcel sizes we gave out in August and September at each of our distribution centres. It shows a continued clear difference in the proportion of different parcels given out – there are considerably less family parcels given out at New Volunteer House and Burntisland.

*NB: In July 2022 we made significant changes to our way of working as from that date we limited people to one food parcel per week. Previously, we limited people to one every 3 days, so some received more than one parcel in a week. Our volunteers may still provide some extras in the same week, but not more than one food parcel. We required to make these changes as the increase in demand for our services, increases in food prices and reductions in donations meant that we were not financially sustainable. This change is very likely to have reduced the number of visits we record each month since mid-July.*

**Table and graph showing number of visits (not including visits for extras only) —the table also shows the change from the same month in the previous year as a percentage**

**NUMBER OF VISITS (not including those for extras only)**

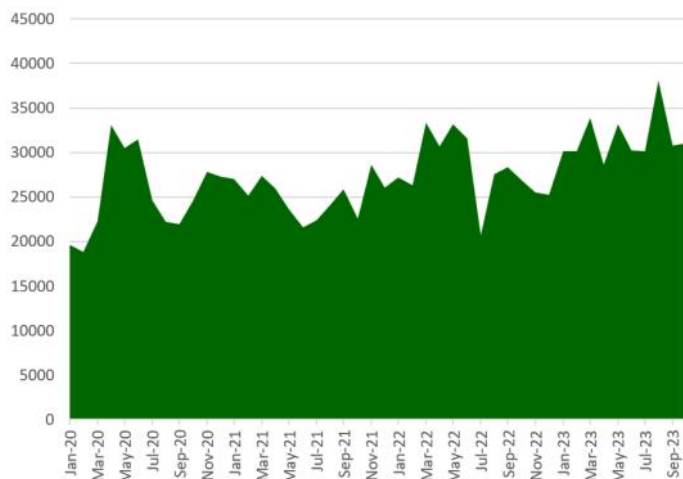
	2022	2023	% change from 2022
Jan	1326	1427	7.6%
Feb	1285	1424	10.8%
Mar	1595	1612	1.1%
Apr	1475	1352	-8.3%
May	1582	1559	-1.5%
Jun	1537	1462	-4.9%
Jul	1027	1452	41.4%
Aug	1301	1752	34.7%
Sept	1354	1485	9.7%
Oct	1327	1492	12.4%
Nov	1223		
Dec	1173		



**Graph showing number of visits (including those for extras only)**



**Graphs and table showing the different parcel sizes given out and the total number of meals provided in 2020—2023 (table and one graph on next page)**



(NB the total number of meals figure is calculated by multiplying the number of parcels x size of parcel (single, couple or family etc) x 3 days x 3 meals a day. Therefore it is an indicative and not exact figure. As 'Extras only' means that a full parcel was not given on that visit, they have not been taken into account in calculating the total number of meals or people provided with food.)

**Graph showing the total number of meals provided**

**Table showing the different parcel sizes given out and the total number of meals provided in this and the previous year**

month	Single	Couple	Family	Single + Couple	Extras (not included in total meals or people)	Total number of meals provided	%age change from previous year in number of meals provided	proportion of singles	proportion of family
Jan-22	510	373	439	4	94	27216	0.5%	38.5%	33.1%
Feb-22	496	349	434	3	97	26325	4.8%	38.7%	33.9%
Mar-22	606	426	562	1	99	33381	22.0%	38.0%	35.2%
Apr-22	573	383	514	5	81	30690	18.0%	38.8%	34.8%
May-22	618	392	570	2	98	33192	40.5%	39.1%	36.0%
Jun-22	619	391	527	0	76	31581	46.4%	40.3%	34.3%
Jul-22	415	280	331	1	41	20718	-7.6%	40.4%	32.2%
Aug-22	466	367	463	5	70	27603	14.6%	35.8%	35.6%
Sep-22	503	376	473	0	69	28323	9.5%	37.2%	35.0%
Oct-22	514	388	423	2	88	26892	19.2%	38.7%	31.9%
Nov-22	448	357	415	3	98	25479	-10.9%	36.6%	33.9%
Dec-22	400	341	428	4	95	25254	-3.1%	31.5%	33.8%
Jan-23	531	383	512	1	108	30132	10.7%	37.2%	35.9%
Feb-23	530	375	516	3	131	30177	14.6%	37.2%	36.2%
Mar-23	611	423	576	2	129	33903	1.6%	37.9%	35.7%
Apr-23	494	371	485	2	120	28638	-6.7%	36.5%	35.9%
May-23	579	402	573	5	155	33210	0.1%	37.1%	36.8%
Jun-23	569	390	502	1	158	30240	-4.2%	38.9%	34.3%
Jul-23	583	351	515	3	141	30186	45.7%	40.2%	35.5%
Aug-23	621	456	675	0	167	38097	38.0%	35.4%	38.5%
Sep-23	548	439	498	0	152	30762	8.6%	36.9%	33.5%
Oct-23	560	421	510	1	164	31005	15.3%	37.5%	34.2%

**Graph showing the different parcel sizes given out: 2020—2023**

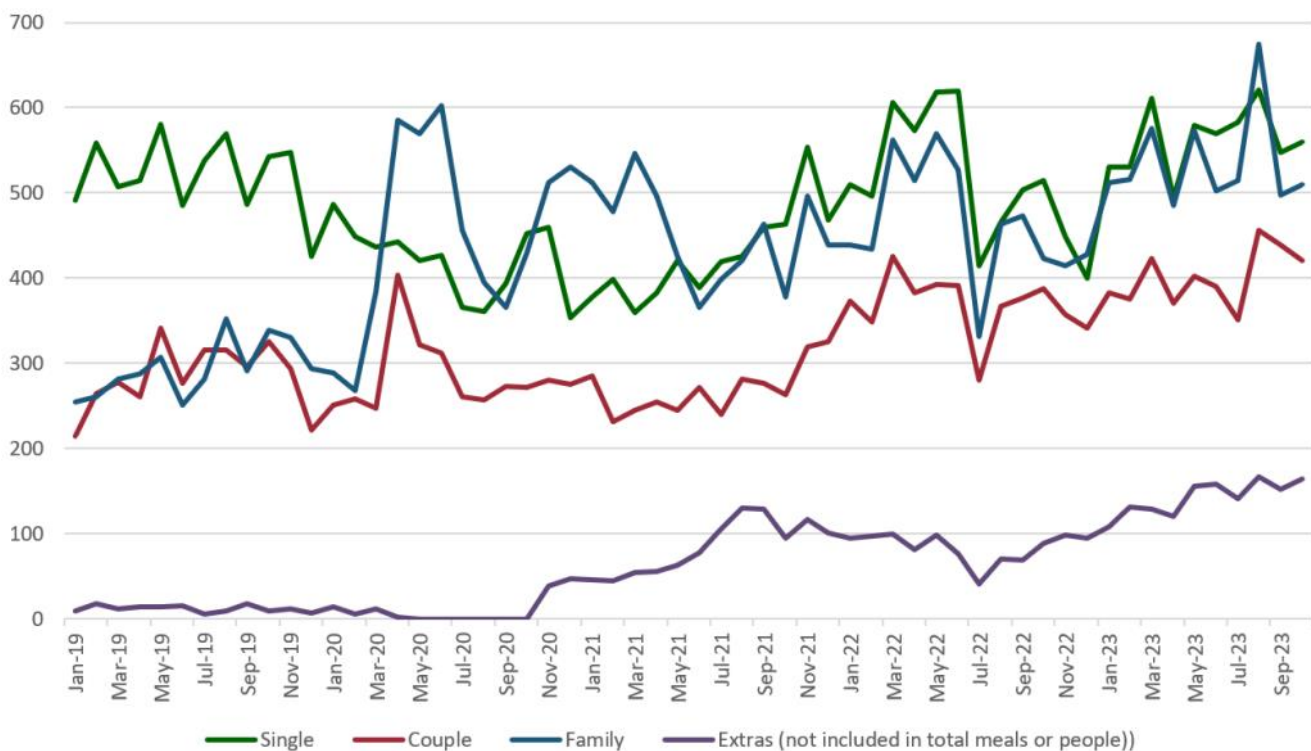
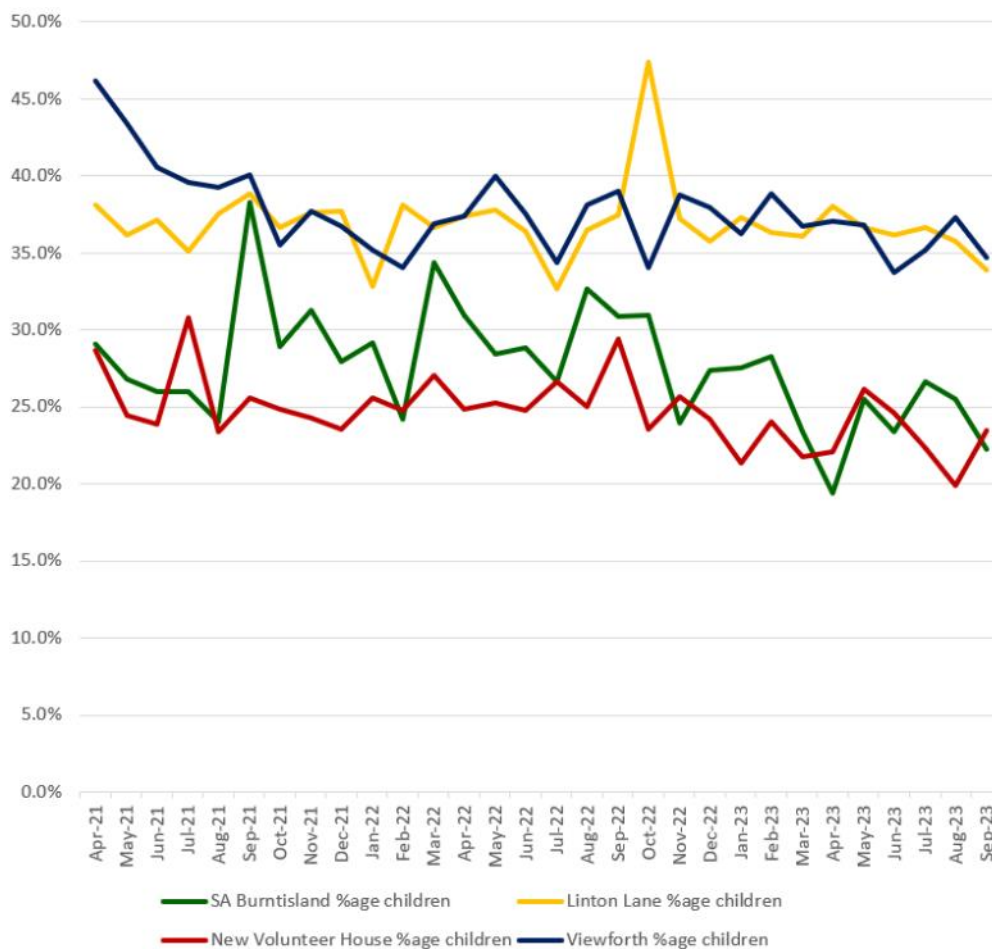


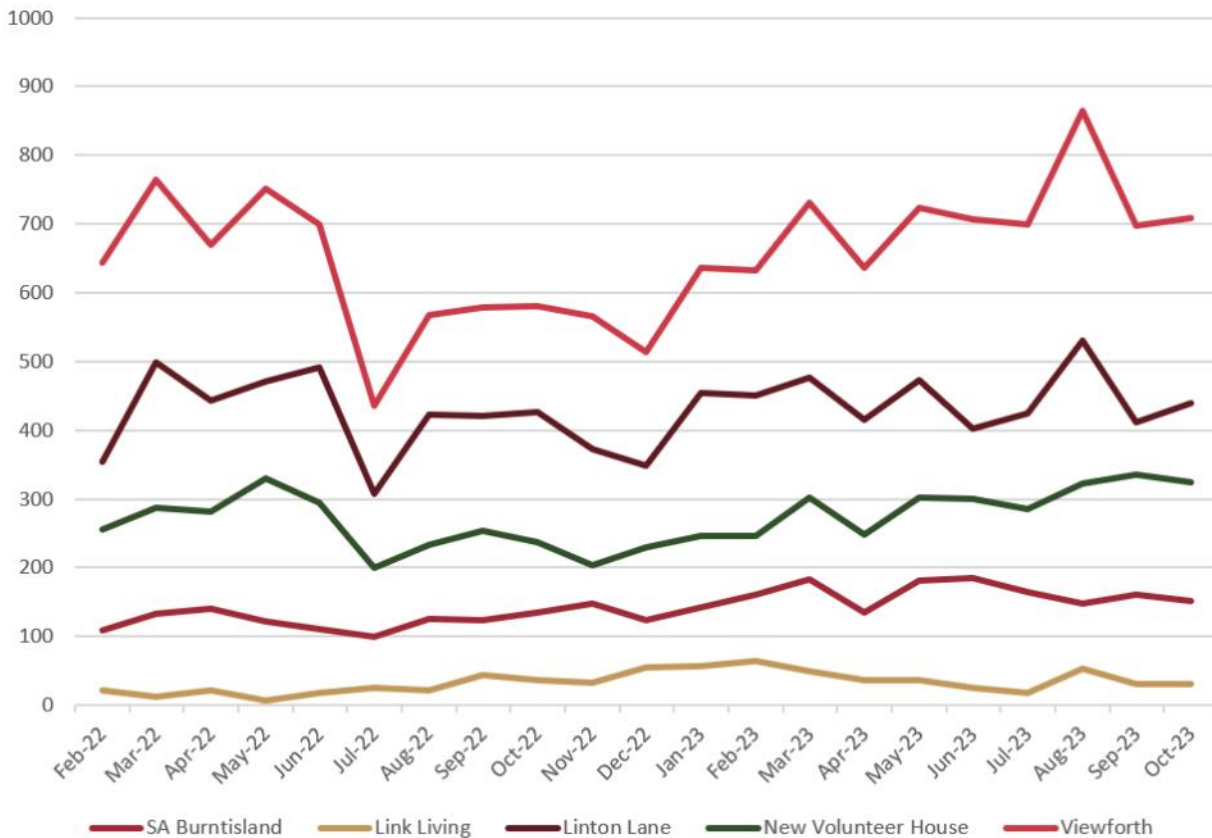
Table showing the total number of adults and children provided with food and the percentage of children in the past 12 months *NB: as the adults and children may be provided with food more than once in the month, this is not a count of the total number of individual adults and children we have helped.*

	ADULTS	CHILDREN	%AGE CHILDREN
Oct-22	1855	1086	36.9%
Nov-22	2008	1096	35.3%
Dec-22	2013	1065	34.6%
Jan-23	2385	1209	33.6%
Feb-23	2356	1265	34.9%
Mar-23	2694	1329	33.0%
Apr-23	2251	1153	33.9%
May-23	2640	1370	34.2%
Jun-23	2461	1209	32.9%
Jul-23	2441	1194	32.8%
Aug-23	2716	1389	33.8%
Sep-23	2501	1149	31.5%
Oct-23	2556	1240	32.7%
<b>TOTAL %AGE CHILDREN IN 2023</b>			<b>33.3%</b>

Graph showing the percentage of children being provided with food at each of our distribution points since April 2021



**Graph showing the number of visits to our distribution points since February 2022**

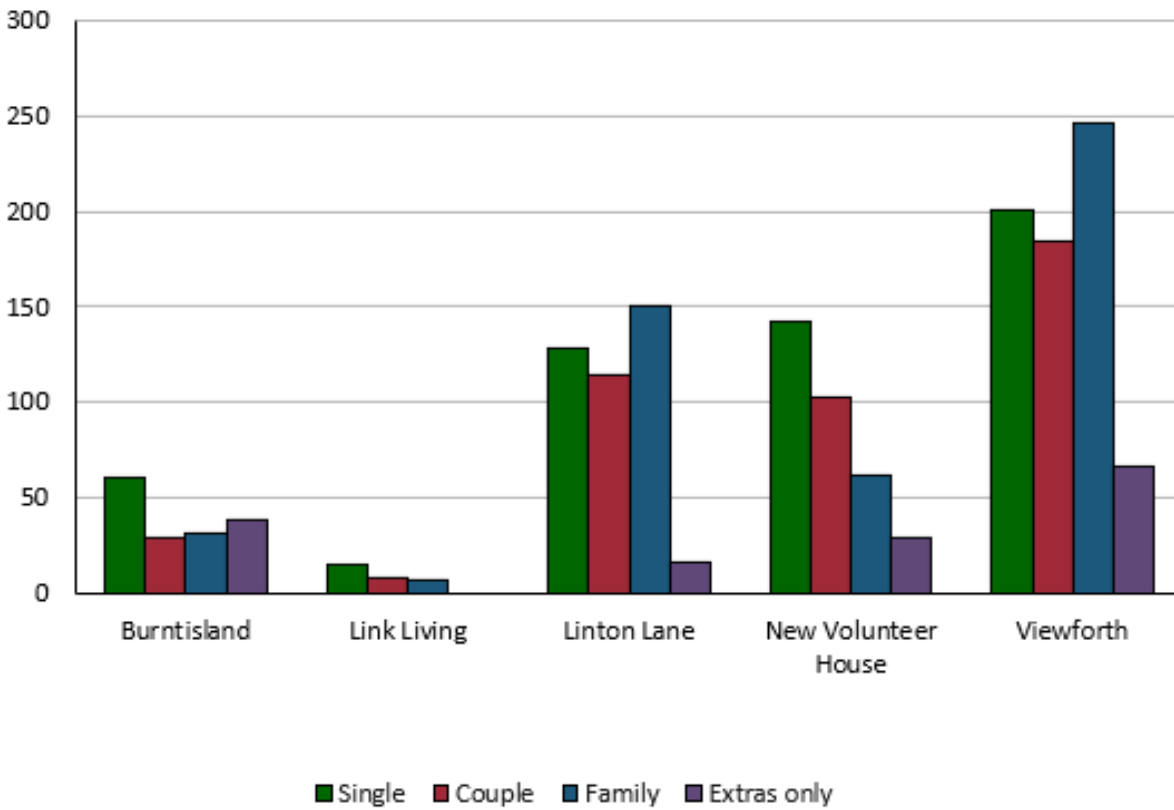


**Table showing the percentage of our visits to our distribution points since February 2022**

	SA Burntisland	Link Living	Linton Lane	New Volunteer House	Viewforth
Feb-22	7.8%	1.6%	25.6%	18.5%	46.6%
Mar-22	7.8%	0.7%	29.5%	16.9%	45.1%
Apr-22	9.0%	1.3%	28.5%	18.1%	43.1%
May-22	7.3%	0.4%	28.0%	19.6%	44.8%
Jun-22	6.9%	1.1%	30.5%	18.2%	43.3%
Jul-22	9.4%	2.4%	28.7%	18.7%	40.7%
Aug-22	9.2%	1.6%	30.8%	17.0%	41.4%
Sep-22	8.7%	3.1%	29.6%	17.9%	40.7%
Oct-22	9.5%	2.6%	30.2%	16.7%	41.1%
Nov-22	11.1%	2.5%	28.2%	15.4%	42.8%
Dec-22	9.7%	4.3%	27.5%	18.1%	40.5%
Jan-23	9.3%	3.6%	29.6%	16.1%	41.4%
Feb-23	10.3%	4.1%	29.0%	15.9%	40.7%
Mar-23	10.5%	2.8%	27.4%	17.3%	42.0%
Apr-23	9.2%	2.5%	28.2%	16.8%	43.3%
May-23	10.6%	2.1%	27.6%	17.6%	42.2%
Jun-23	11.4%	1.6%	24.8%	18.5%	43.6%
Jul-23	10.4%	1.1%	26.6%	18.0%	43.9%
Aug-23	7.7%	2.8%	27.7%	16.8%	45.0%
Sep-23	9.8%	1.9%	25.1%	20.5%	42.6%
Oct-23	9.2%	1.9%	26.6%	19.6%	42.8%
<b>TOTAL</b>	<b>11.7%</b>	<b>2.7%</b>	<b>35.5%</b>	<b>22.5%</b>	<b>42.6%</b>

Graphs showing parcel types provided from each of our distribution points in the last 2 months

September 2023



October 2023

