



Data Report: March 2024

(showing data to the end of February 2024)

This report provides data on Foodbank use up to the previous month.

Key messages from the data:

- August was our busiest month ever with 1752 visits (1919 if visits for extras are included). Since then, every month other than January are seen a reduction in the number of visits. (see TABLE 1 and GRAPHS 1 and 2 on page 2). In February, the number of visits was 13% lower than in February 2023, and lower even than February 2022 (see GRAPH 1) – in January, the number of visits was nearly identical to January 2023.
- GRAPH 4 on page 4 shows that the most significant reduction was seen in family parcels.
- TABLE 3 shows that the proportion of people receiving food from us who are children has been 32% in 2024. GRAPH 5 on page 5 shows that the proportion of people receiving food who are children continues to be remarkably similar at Viewforth and Linton Lane. The proportion is much lower at New Volunteer House and Burntisland. This is relevant for the services that are targeted at our various centres.
- TABLE 4 shows that 10% of our visits in 2024 have been to Burntisland. Viewforth continues to be the busiest with 40% of our visits. Only 2% of our visits are to Link Living (clients require a referral form from an agency to get food there).
- GRAPH 7 on page 7 shows the number of different parcel sizes we gave out last month at each of our distribution centres. It shows a continued clear difference in the proportion of different parcels given out – there are considerably less family parcels given out at New Volunteer House and Burntisland. Linton Lane is the only centre at which the most frequent parcel given out is family size. At every other centre the most common parcel size is for a single person. This represents a marked change at Viewforth, where previously the most common parcel size was always a family sized one.

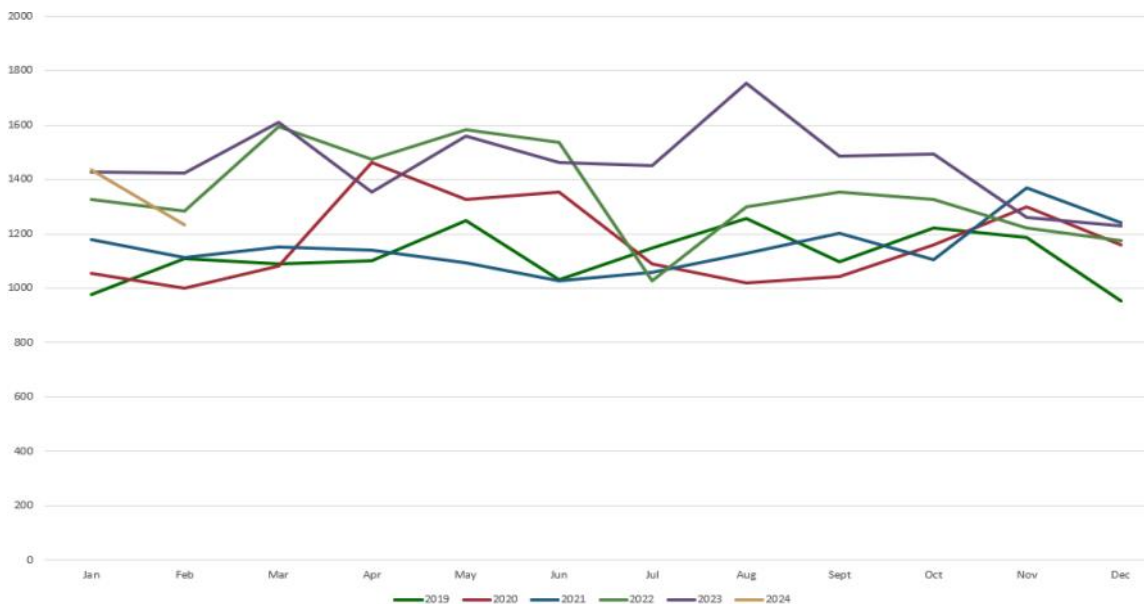
NB: In July 2022 we made significant changes to our way of working as from that date we limited people to one food parcel per week. Previously, we limited people to one every 3 days, so some received more than one parcel in a week. Our volunteers may still provide some extras in the same week, but not more than one food parcel. We required to make these changes as the increase in demand for our services, increases in food prices and reductions in donations meant that we were not financially sustainable. This change is very likely to have reduced the number of visits we record each month since mid-July.

NUMBER OF VISITS TO THE FOODBANK

TABLE 1: table showing number of visits (not including visits for extras only) —and the change from the same month in the previous year as a percentage

	2023	2024	% change 2023 - 2024
Jan	1427	1434	0.5%
Feb	1424	1235	-13.3%
Mar	1612		
Apr	1352		
May	1559		
Jun	1462		
Jul	1452		
Aug	1752		
Sept	1485		
Oct	1492		
Nov	1262		
Dec	1228		

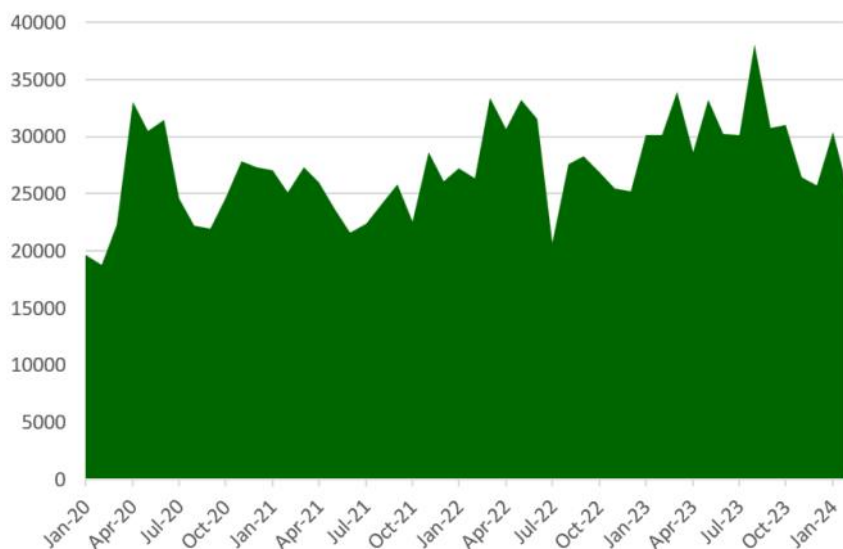
GRAPH 1: Graph showing year on year comparison of the number of visits (not including those for extras only)



GRAPH 2: Graph showing number of visits (including those for extras only)



DIFFERENT PARCEL SIZES DISTRIBUTED AND THE NUMBER OF MEALS PROVIDED



GRAPH 3: Graph showing the total number of meals provided in 2020 to date

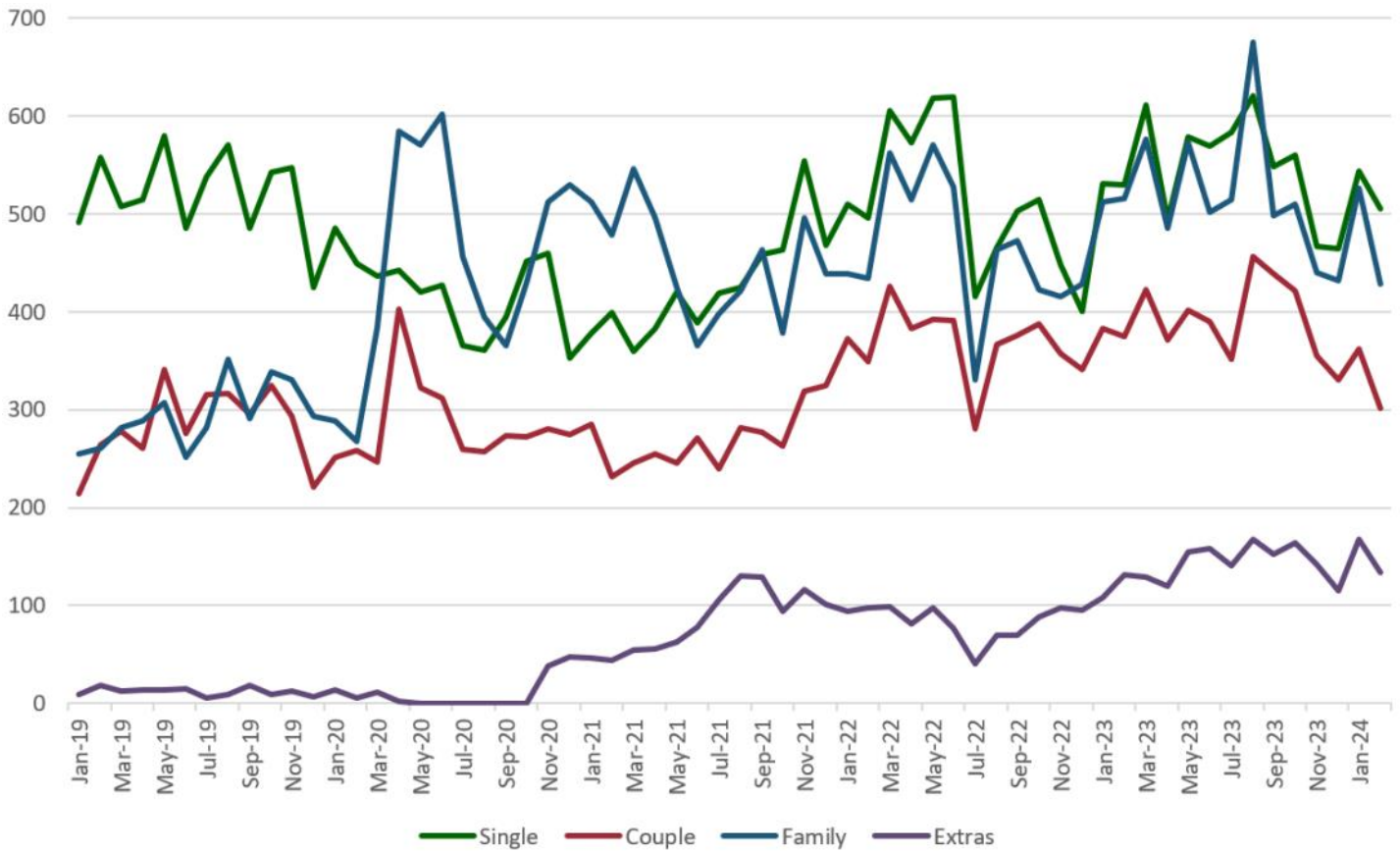
(NB the total number of meals figure is calculated by multiplying the number of parcels x size of parcel (single, couple or family etc) x 3 days x 3 meals a day. Therefore it is an indicative and not exact figure. As 'Extras only' means that a full parcel was not given on that visit, they have not been taken into account in calculating the total number of meals or people provided with food.)

TABLE 2: table showing data from this and previous year on:

- the number of different parcel sizes given out (including extras)
- the total number of meals provided (see methodology above)
- the percentage change from the previous year in the number of meals provided
- the proportion of single parcels and the proportion of family parcels.

month	Single	Couple	Family	Single + Couple	Extras	Total number of meals provided	total number of visits (incl extras)	%age change from previous year in number of meals provided	proportion of family
Jan-23	531	383	512	1	108	30132	1535	10.7%	35.9%
Feb-23	530	375	516	3	131	30177	1555	14.6%	36.2%
Mar-23	611	423	576	2	129	33903	1741	1.6%	35.7%
Apr-23	494	371	485	2	120	28638	1472	-6.7%	35.9%
May-23	579	402	573	5	155	33210	1714	0.1%	36.8%
Jun-23	569	390	502	1	158	30240	1620	-4.2%	34.3%
Jul-23	583	351	515	3	141	30186	1593	45.7%	35.5%
Aug-23	621	456	675	0	167	38097	1919	38.0%	38.5%
Sep-23	548	439	498	0	152	30762	1637	8.6%	33.5%
Oct-23	560	421	510	1	164	31005	1656	15.3%	34.2%
Nov-23	467	355	440	0	142	26433	1404	3.7%	34.9%
Dec-23	464	331	432	1	115	25713	1343	1.8%	35.2%
Jan-24	544	362	526	2	167	30402	1601	0.9%	36.7%
Feb-24	505	301	428	1	134	25398	1369	-15.7%	34.7%

GRAPH 4: Graph showing the different parcel sizes given out: 2019 to date

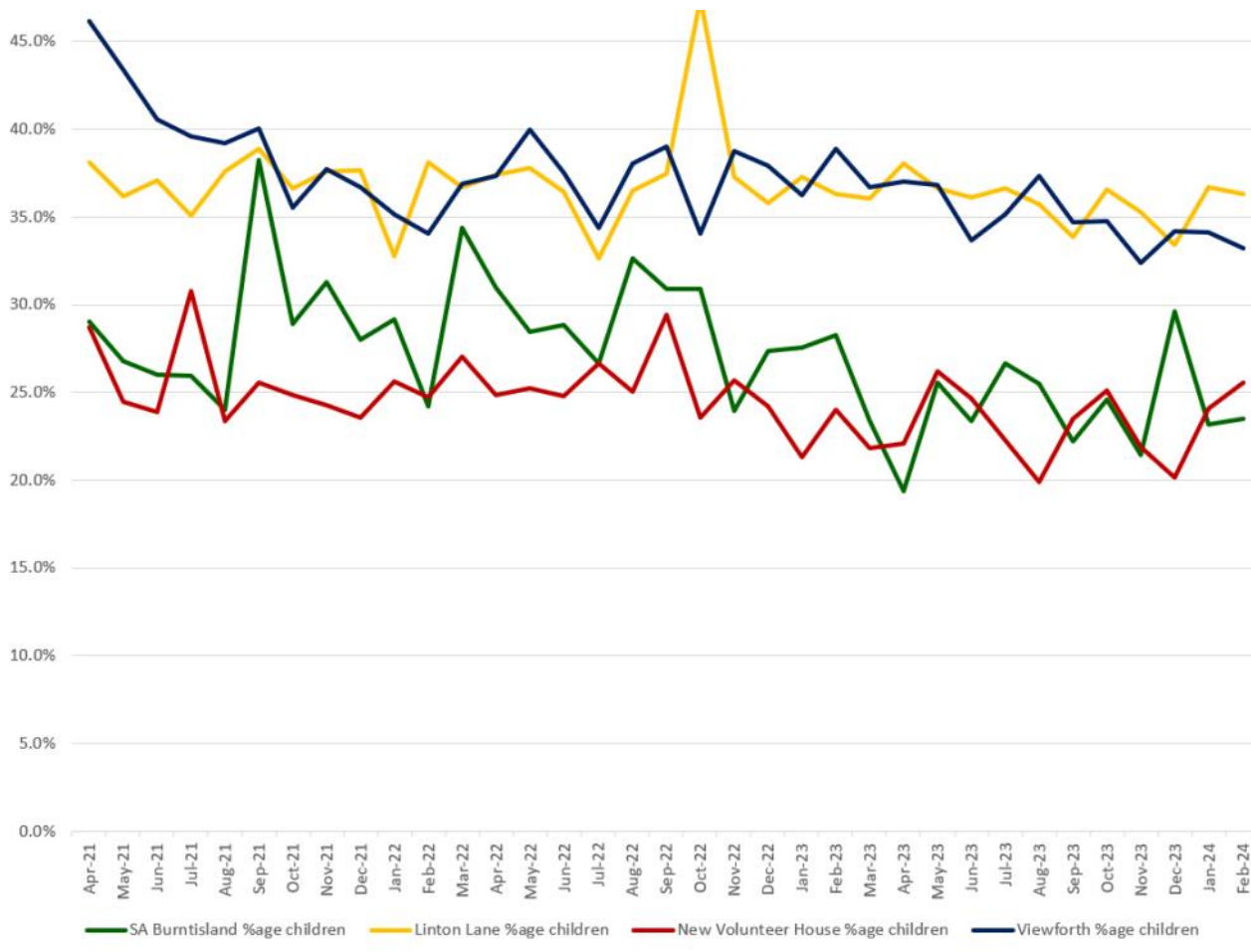


CHILDREN RECEIVING OUR SUPPORT

TABLE 3: Table showing the total number of adults and children provided with food and the percentage of children in the past 12 months *NB: as the adults and children may be provided with food more than once in the month, this is not a count of the total number of individual adults and children we have helped.*

	ADULTS	CHILDREN	%AGE CHILDREN
Mar-23	2694	1329	33.0%
Apr-23	2251	1153	33.9%
May-23	2640	1370	34.2%
Jun-23	2461	1209	32.9%
Jul-23	2441	1194	32.8%
Aug-23	2716	1389	33.8%
Sep-23	2501	1149	31.5%
Oct-23	2556	1240	32.7%
Nov-23	2192	985	31.0%
Dec-23	2109	963	31.3%
Jan-24	2476	1171	32.1%
Feb-24	2057	983	32.3%
TOTAL %AGE CHILDREN IN 2024			32.2%

GRAPH 5: Graph showing the percentage of children being provided with food at each of our distribution points since April 2021



DISTRIBUTION POINTS

GRAPH 6: Graph showing the number of visits to our distribution points since February 2022

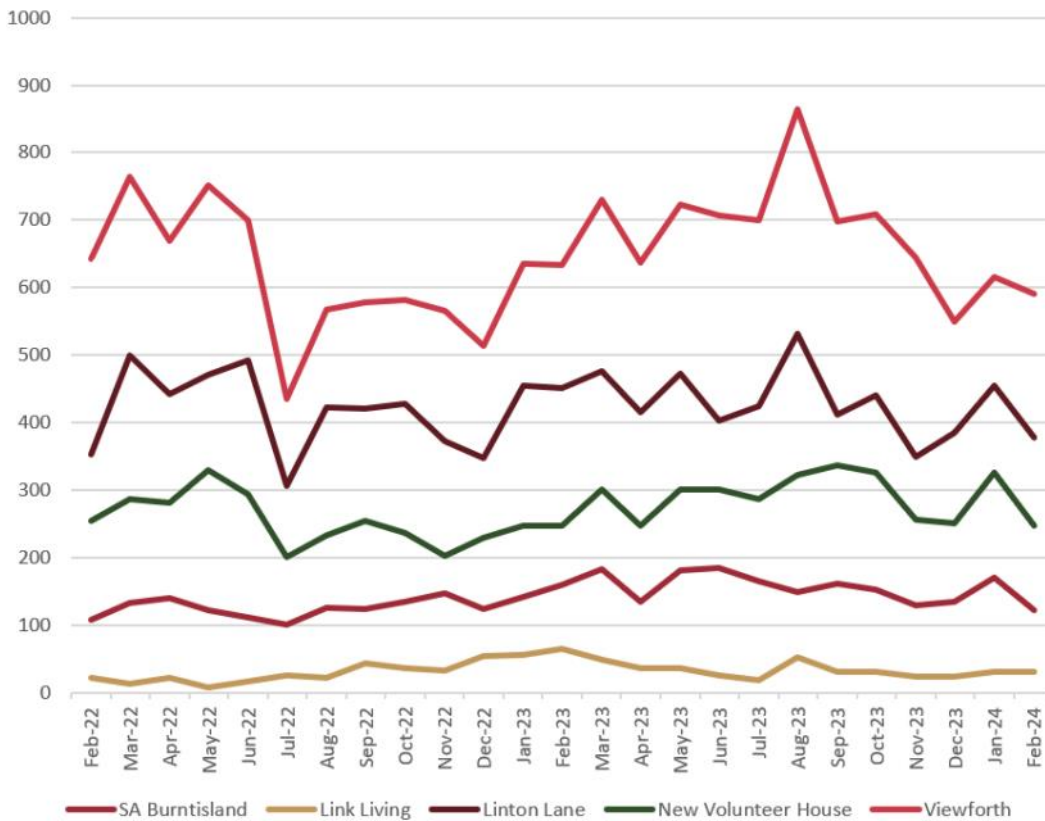


TABLE 4: Table showing the percentage of our visits to our distribution points in the past 12 months

	SA Burntisland	Link Living	Linton Lane	New Volunteer House	Viewforth
Mar-23	10.5%	2.8%	27.4%	17.3%	42.0%
Apr-23	9.2%	2.5%	28.2%	16.8%	43.3%
May-23	10.6%	2.1%	27.6%	17.6%	42.2%
Jun-23	11.4%	1.6%	24.8%	18.5%	43.6%
Jul-23	10.4%	1.1%	26.6%	18.0%	43.9%
Aug-23	7.7%	2.8%	27.7%	16.8%	45.0%
Sep-23	9.8%	1.9%	25.1%	20.5%	42.6%
Oct-23	9.2%	1.9%	26.6%	19.6%	42.8%
Nov-23	9.3%	1.6%	24.9%	18.3%	45.9%
Dec-23	10.0%	1.8%	28.7%	18.7%	40.9%
Jan-24	10.7%	1.9%	28.5%	20.4%	38.5%
Feb-24	8.9%	2.3%	27.6%	18.1%	43.1%
TOTAL FOR 2024	9.9%	2.1%	28.1%	19.3%	40.6%

PARCEL SIZES AT OUR DISTRIBUTION POINTS

GRAPH 7: Graph showing parcel types provided from each of our distribution points in the last month

