



Data Report: July 2023 (showing data to the end of June 2023)

This report provides data on Foodbank use up to the previous month.

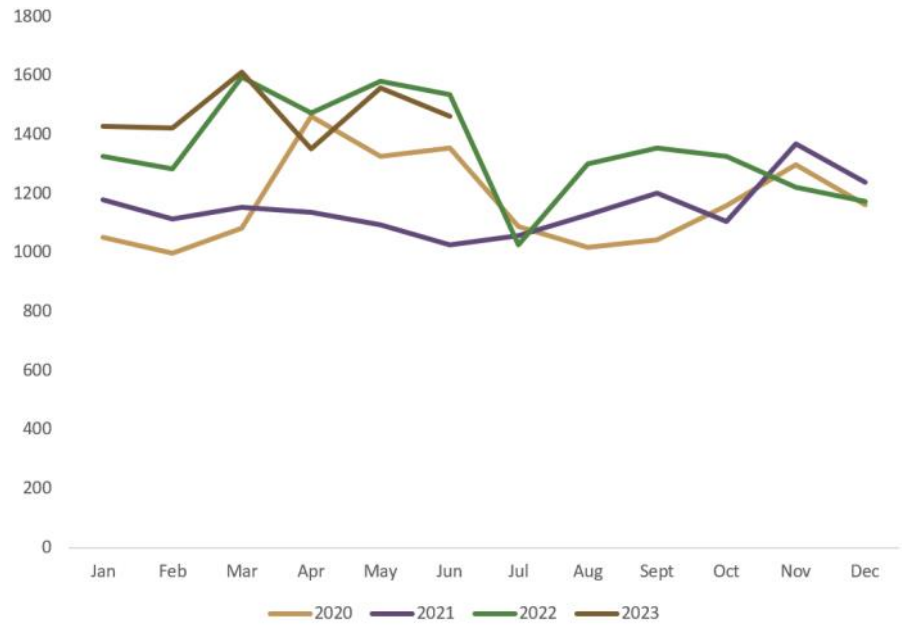
Key messages from the data:

- After our busiest month ever in March 2023, we have had 3 months that have shown a reduction in visits compared to 2022. However, May 2023 was still our 4th busiest month ever, even if it showed a small reduction from May 2022.
- The table and graph at the top of page 2 show the number of visits for food, but don't include visits for extras. Since July 2022 we have only allowed people to get one parcel per week – if they require to visit again, we only provide them with extras. That will provide at least some of the explanation for the reduction in visits since April. When visits for extras are included (see the 2nd graph on page 2), the number of visits in March, May and June this year are very similar to last year.
- The graph at the foot of page 3 shows that there was a reduction in all parcel sizes given out in June, but particularly in family parcels. However, it also shows a slight increase in the number of extras given out.
- During 2023 34% of the people receiving food from us have been children.
- The percentage of children receiving food in our various distribution centres continues to vary as shown in the graph on page 4 – at both Linton Lane and Viewforth there is a considerably larger percentage of children who receive food from us, when compared to New Volunteer House and Burntisland. There has been a particular reduction in the proportion of children receiving food from us at Burntisland in the last few months.
- The graph on page 5 shows that the decrease in visits was seen at both Viewforth and Linton Lane (particularly at Linton Lane), but not at New Volunteer House or Burntisland. This reflects the particular decrease in the number of family parcels we gave out - there is a much lower proportion of family parcels given out at New Volunteer House and Burntisland.
- The graph on page 6 shows the number of different parcel sizes we gave out in June at each of our distribution centres. It shows a continued clear difference in the proportion of different parcels given out – there are considerably less family parcels given out at New Volunteer House and Burntisland. At both Linton Lane and Viewforth, the most common parcel size was family parcels. Not surprisingly, this reflects the data on the percentage of children who receive food from us at our various distribution points.

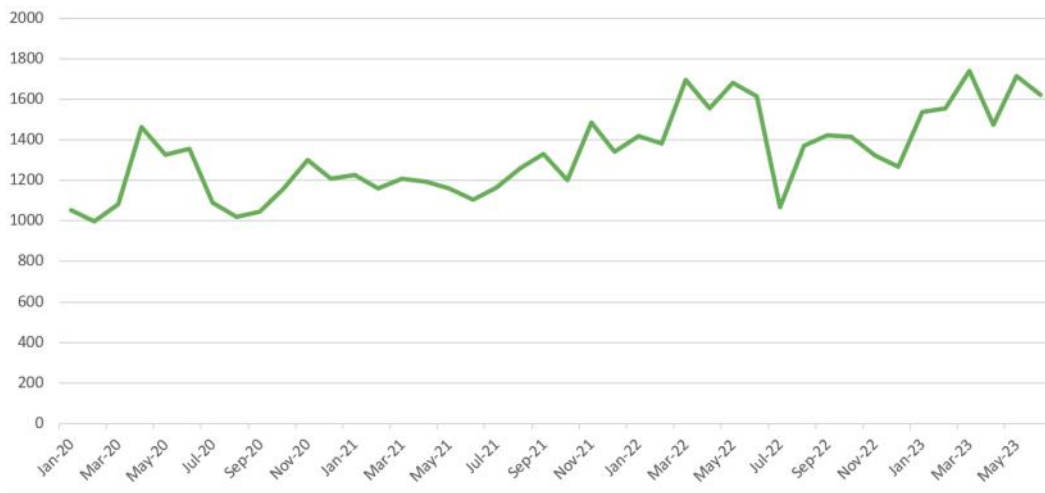
NB: In July 2022 we made significant changes to our way of working as from that date we limited people to one food parcel per week. Previously, we limited people to one every 3 days, so some received more than one parcel in a week. Our volunteers may still provide some extras in the same week, but not more than one food parcel. We required to make these changes as the increase in demand for our services, increases in food prices and reductions in donations meant that we were not financially sustainable. This change is very likely to have reduced the number of visits we record each month since mid-July.

Table and graph showing number of visits (not including visits for extras only) —the table also shows the change from the same month in the previous year as a percentage

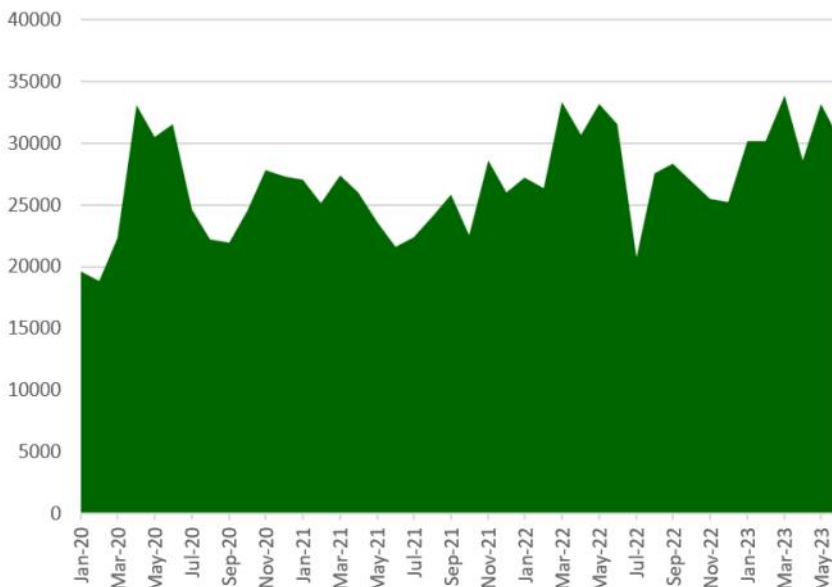
NUMBER OF VISITS (not including those for extras only)			
	2022	2023	% change from 2022
Jan	1326	1427	7.6%
Feb	1285	1424	10.8%
Mar	1595	1612	1.1%
Apr	1475	1352	-8.3%
May	1582	1559	-1.5%
Jun	1537	1462	-4.9%
Jul	1027		
Aug	1301		
Sept	1354		
Oct	1327		
Nov	1223		
Dec	1173		



Graph showing number of visits (including those for extras only)



Graphs and table showing the different parcel sizes given out and the total number of meals provided in 2020—2023 (table and one graph on next page)



(NB the total number of meals figure is calculated by multiplying the number of parcels x size of parcel (single, couple or family etc) x 3 days x 3 meals a day. Therefore it is an indicative and not exact figure. As 'Extras only' means that a full parcel was not given on that visit, they have not been taken into account in calculating the total number of meals or people provided with food.)

Table showing the different parcel sizes given out and the total number of meals provided in this and the previous year

month	Single	Couple	Family	Single + Couple	Extras (not included in total meals or people))	Total number of meals provided	%age change from previous year in number of meals provided	proportion of singles	proportion of family
Jan-22	510	373	439	4	94	27216	0.5%	38.5%	33.1%
Feb-22	496	349	434	3	97	26325	4.8%	38.7%	33.9%
Mar-22	606	426	562	1	99	33381	22.0%	38.0%	35.2%
Apr-22	573	383	514	5	81	30690	18.0%	38.8%	34.8%
May-22	618	392	570	2	98	33192	40.5%	39.1%	36.0%
Jun-22	619	391	527	0	76	31581	46.4%	40.3%	34.3%
Jul-22	415	280	331	1	41	20718	-7.6%	40.4%	32.2%
Aug-22	466	367	463	5	70	27603	14.6%	35.8%	35.6%
Sep-22	503	376	473	0	69	28323	9.5%	37.2%	35.0%
Oct-22	514	388	423	2	88	26892	19.2%	38.7%	31.9%
Nov-22	448	357	415	3	98	25479	-10.9%	36.6%	33.9%
Dec-22	400	341	428	4	95	25254	-3.1%	31.5%	33.8%
Jan-23	531	383	512	1	108	30132	10.7%	37.2%	35.9%
Feb-23	530	375	516	3	131	30177	14.6%	37.2%	36.2%
Mar-23	611	423	576	2	129	33903	1.6%	37.9%	35.7%
Apr-23	494	371	485	2	120	28638	-6.7%	36.5%	35.9%
May-23	579	402	573	5	155	33210	0.1%	37.1%	36.8%
Jun-23	569	390	502	1	158	30240	-4.2%	38.9%	34.3%

Graph showing the different parcel sizes given out: 2020—2023

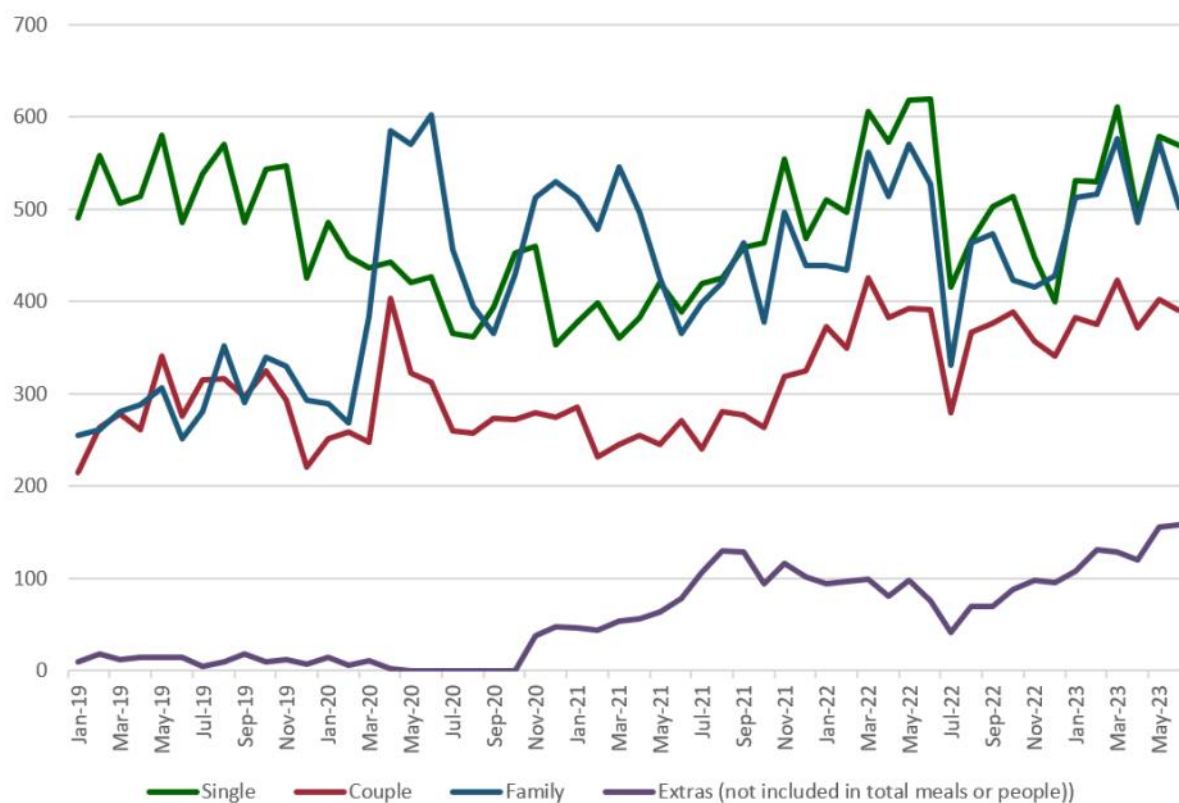
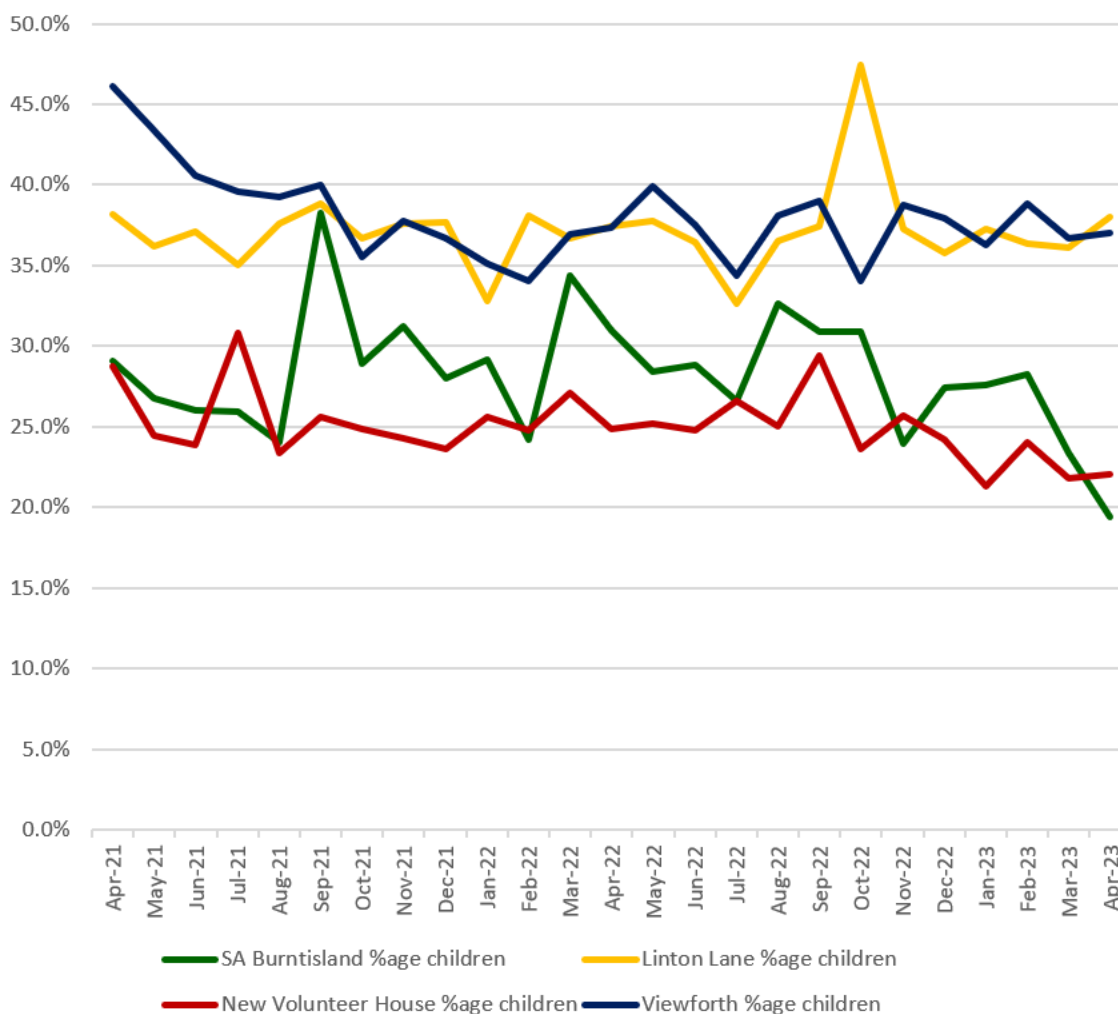


Table showing the total number of adults and children provided with food and the percentage of children in the past 12 months *NB: as the adults and children may be provided with food more than once in the month, this is not a count of the total number of individual adults and children we have helped.*

	ADULTS	CHILDREN	%AGE CHILDREN
Jun-22	2436	1291	34.6%
Jul-22	1641	779	32.2%
Aug-22	2152	1171	35.2%
Sep-22	2167	1228	36.2%
Oct-22	1855	1086	36.9%
Nov-22	2008	1096	35.3%
Dec-22	2013	1065	34.6%
Jan-23	2385	1209	33.6%
Feb-23	2356	1265	34.9%
Mar-23	2694	1329	33.0%
Apr-23	2251	1153	33.9%
May-23	2640	1370	34.2%
Jun-23	2461	1209	32.9%
TOTAL %AGE CHILDREN IN 2023			33.9%

Graph showing the percentage of children being provided with food at each of our distribution points since April 2021



Graph showing the number of visits to our distribution points since February 2022

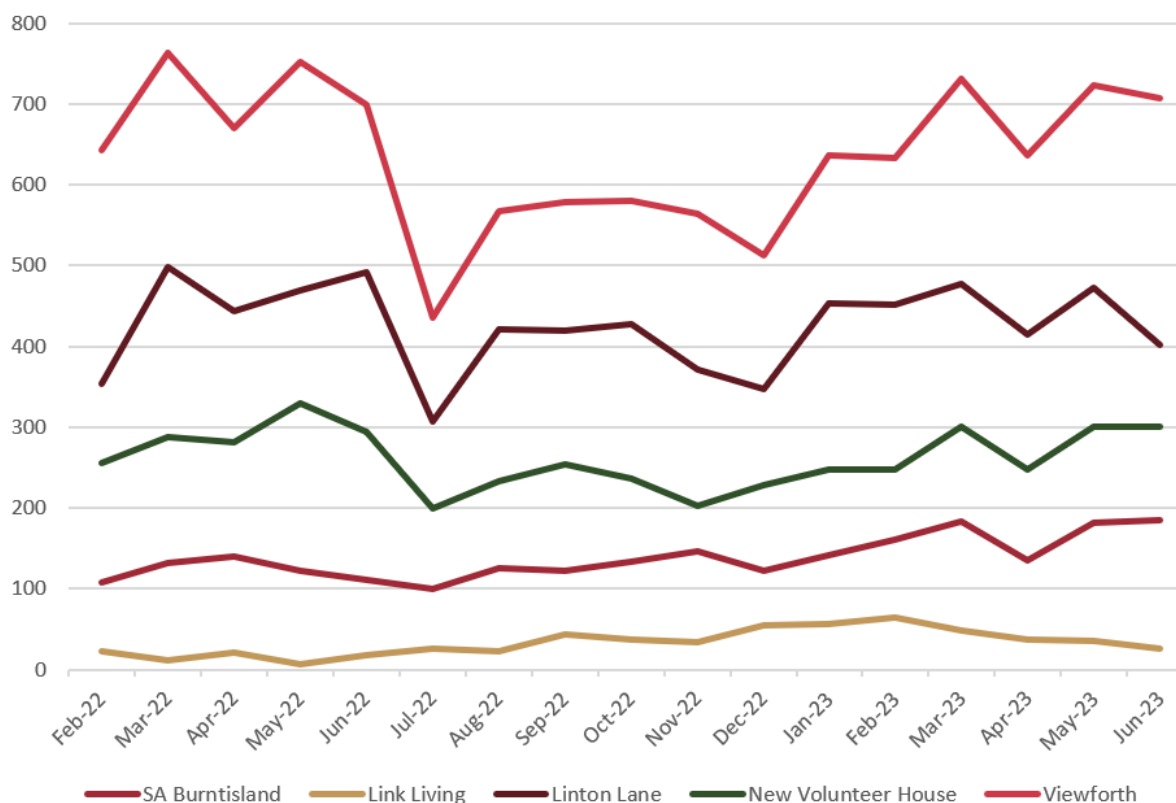


Table showing the percentage of our visits to our distribution points since February 2022

	SA Burntisland	Link Living	Linton Lane	New Volunteer House	Viewforth
Feb-22	7.8%	1.6%	25.6%	18.5%	46.6%
Mar-22	7.8%	0.7%	29.5%	16.9%	45.1%
Apr-22	9.0%	1.3%	28.5%	18.1%	43.1%
May-22	7.3%	0.4%	28.0%	19.6%	44.8%
Jun-22	6.9%	1.1%	30.5%	18.2%	43.3%
Jul-22	9.4%	2.4%	28.7%	18.7%	40.7%
Aug-22	9.2%	1.6%	30.8%	17.0%	41.4%
Sep-22	8.7%	3.1%	29.6%	17.9%	40.7%
Oct-22	9.5%	2.6%	30.2%	16.7%	41.1%
Nov-22	11.1%	2.5%	28.2%	15.4%	42.8%
Dec-22	9.7%	4.3%	27.5%	18.1%	40.5%
Jan-23	9.3%	3.6%	29.6%	16.1%	41.4%
Feb-23	10.3%	4.1%	29.0%	15.9%	40.7%
Mar-23	10.5%	2.8%	27.4%	17.3%	42.0%
Apr-23	9.2%	2.5%	28.2%	16.8%	43.3%
May-23	10.6%	2.1%	27.6%	17.6%	42.2%
Jun-23	11.4%	1.6%	24.8%	18.5%	43.6%
TOTAL	9.3%	2.2%	28.4%	17.5%	42.6%

Graph showing parcel types provided from each of our distribution points in the previous month

