



# Data Report: April 2023

(showing data to the end of March 2023)

This report provides data on Foodbank use from 2019 to the present.

## Key messages from the data:

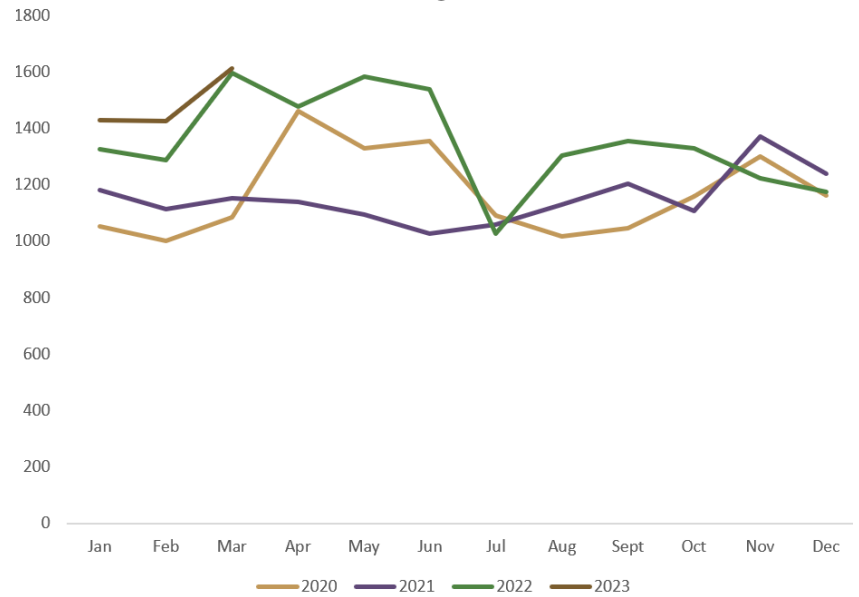
- March 2023 was our busiest month ever with 1612 visits – slightly more than in March 2022, our previous busiest month. This figure does not include visits for extras. If they are included, we had 1741 visits in March. After a reduction in visits between September and December last year, we saw a significant increase in January.
- The second graph on page 2 shows that, other than in November and December, there has been a clear upward trend in the number of visits since August 2022.
- We gave out food for around 34 000 meals in March. (The method of calculating this is shown on page 2 – it is an underestimate).
- The graph on page 3 shows that the increase in March has been seen in all parcel sizes. However, there has been no real increase in the proportion of family parcels we have distributed over the past year – it has fluctuated between 32 and 36% of the parcels we have distributed every month.
- During 2023 34% of the people receiving food from us have been children.
- The percentage of children receiving food in our various distribution centres continues to vary as shown in the graph on page 4 – at both Linton Lane and Viewforth there is a considerably larger percentage of children who receive food from us, when compared to New Volunteer House and Burntisland.
- The graph on page 6 shows the number of different parcel sizes we gave out in March at each of our distribution centres. It shows a continued clear difference in the proportion of different parcels given out – there are considerably less family parcels given out at New Volunteer House and Burntisland. At both Linton Lane and Viewforth, the most common parcel size was family parcels.

*NB: In July 2022 we made significant changes to our way of working as from that date we limited people to one food parcel per week. Previously, we limited people to one every 3 days, so some received more than one parcel in a week. Our volunteers may still provide some extras in the same week, but not more than one food parcel. We required to make these changes as the increase in demand for our services, increases in food prices and reductions in donations meant that we were not financially sustainable. This change is very likely to have reduced the number of visits we record each month since mid-July.*

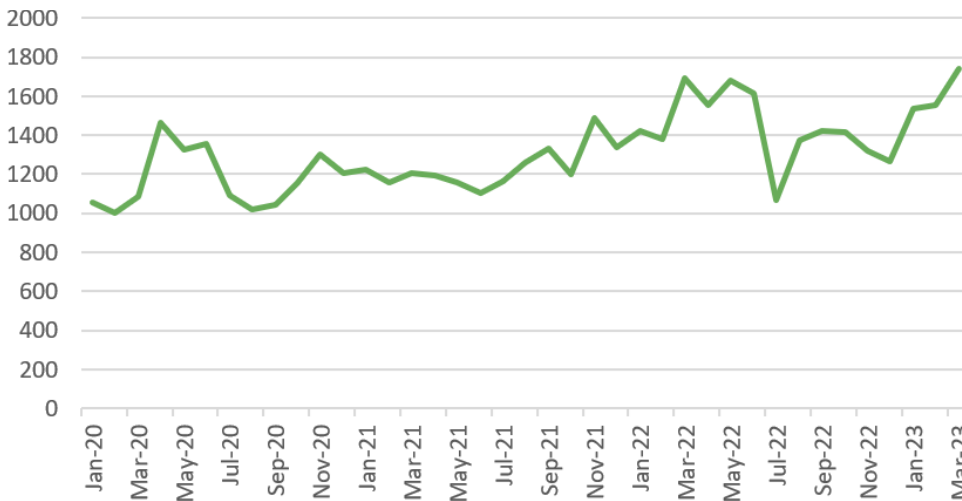
**Table and graph showing number of visits (not including visits for extras only) —the table also shows the change from the same month in the previous year as a percentage**

**NUMBER OF VISITS (not including those for extras only)**

	2022	2023	% change from 2022
Jan	1326	1427	7.6%
Feb	1285	1424	10.8%
Mar	1595	1612	1.1%
Apr	1475		
May	1582		
Jun	1537		
Jul	1027		
Aug	1301		
Sept	1354		
Oct	1327		
Nov	1223		
Dec	1173		

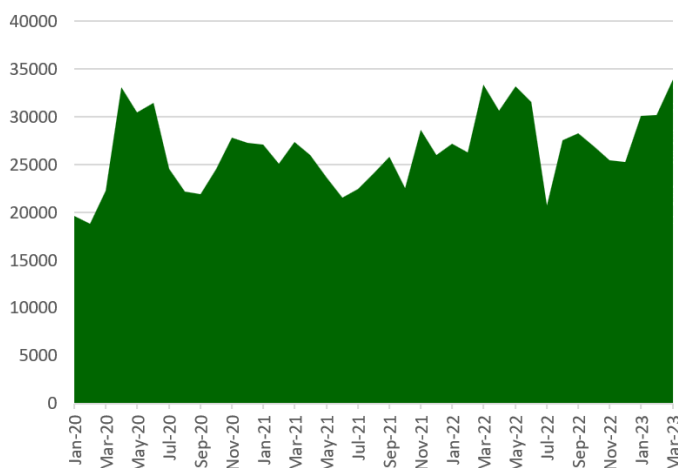


**Graph showing number of visits (including those for extras only)**



**Graphs and table showing the different parcel sizes given out and the total number of meals provided in 2020—2023 (table and one graph on next page)**

*(NB the total number of meals figure is calculated by multiplying the number of parcels x size of parcel (single, couple or family etc) x 3 days x 3 meals a day. Therefore it is an indicative and not exact figure. As 'Extras only' means that a full parcel was not given on that visit, they have not been taken into account in calculating the total number of meals or people provided with food.)*



**Graph showing the total number of meals provided**

**Table showing the different parcel sizes given out and the total number of meals provided in this and the previous year**

month	Single	Couple	Family	Single + Couple	Other (including extras only (not included in total	Total number of meals provided	total number of people provided with	%age change from previous year in number of meals	proportion of singles	proportion of family
Jan-22	510	373	439	4	94	27216	3024	0.5%	38.46%	33.11%
Feb-22	496	349	434	3	97	26325	3198	4.8%	38.69%	33.85%
Mar-22	606	426	562	1	99	33381	3709	22.0%	37.99%	35.24%
Apr-22	573	383	514	5	81	30690	3410	18.0%	38.85%	34.85%
May-22	618	392	570	2	98	33192	3688	40.5%	39.06%	36.03%
Jun-22	619	391	527	0	76	31581	3509	46.4%	40.27%	34.29%
Jul-22	415	280	331	1	41	20718	2302	-7.6%	40.41%	32.23%
Aug-22	466	367	463	5	70	27603	3067	14.6%	35.82%	35.59%
Sep-22	503	376	473	0	69	28323	3147	9.5%	37.20%	34.99%
Oct-22	514	388	423	2	88	26892	2988	19.2%	38.73%	31.88%
Nov-22	448	357	415	3	98	25479	2831	-10.9%	36.63%	33.93%
Dec-22	400	341	428	4	95	25254	2806	-3.1%	34.10%	36.49%
Jan-23	531	383	512	1	108	30132	3348	10.7%	37.21%	35.88%
Feb-23	530	375	516	3	131	30177	3353	14.6%	37.22%	36.24%
Mar-23	611	423	576	2	129	33903	3767	1.6%	37.90%	35.73%

**Graph showing the different parcel sizes given out: 2020—2023**

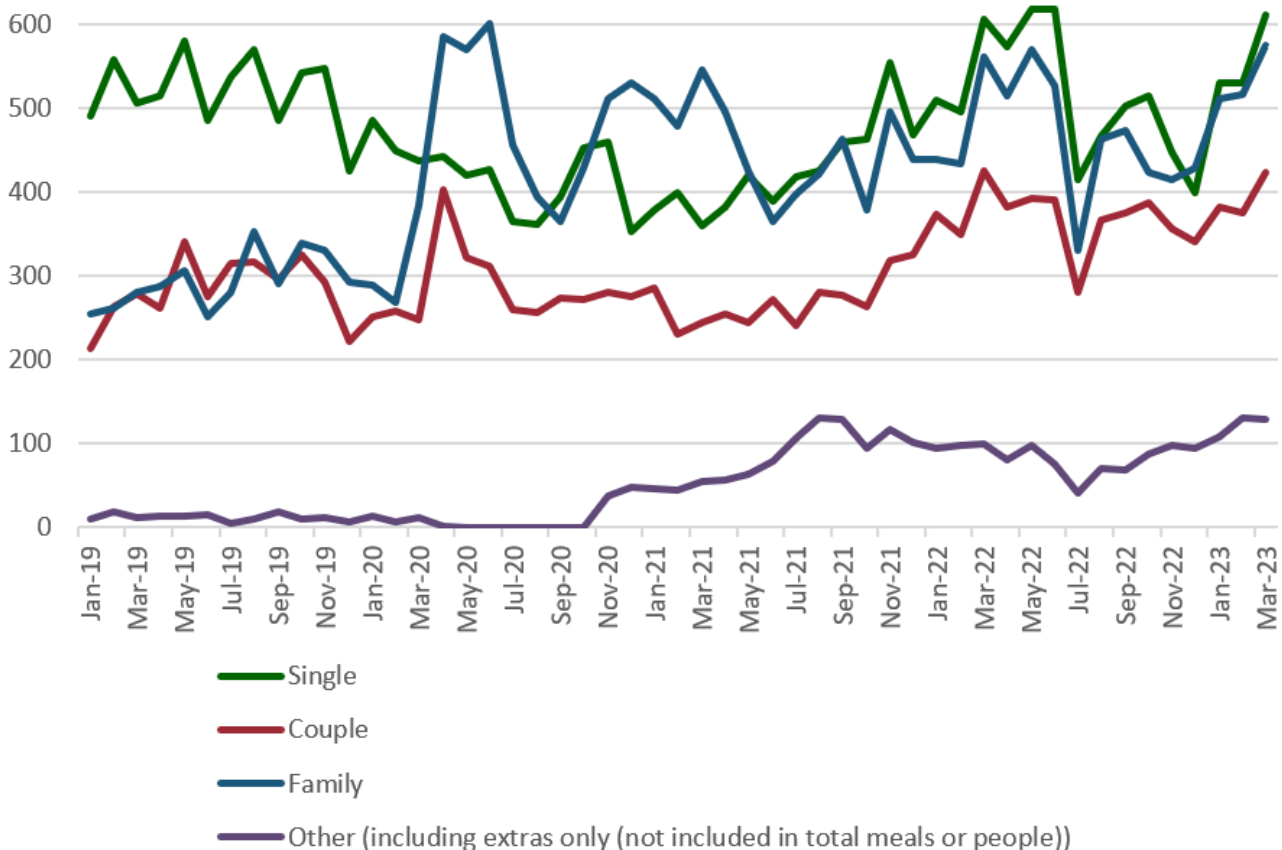
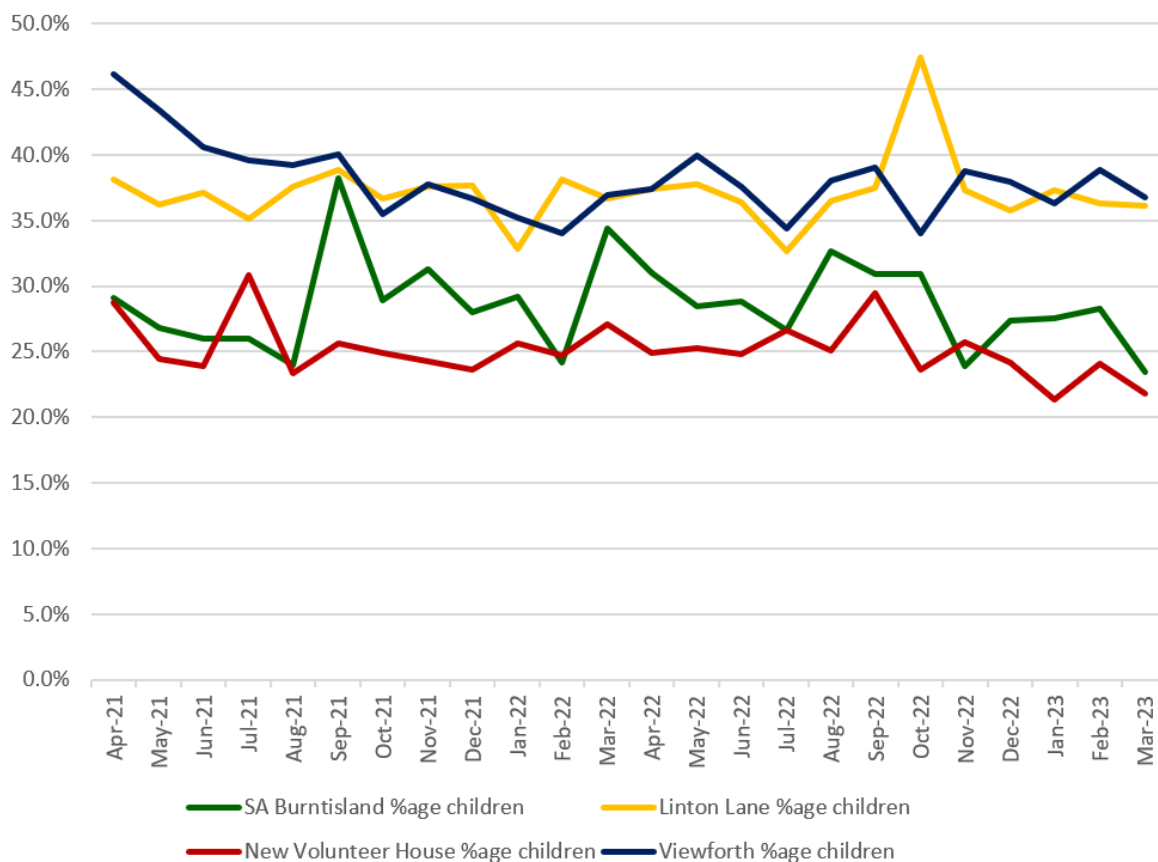


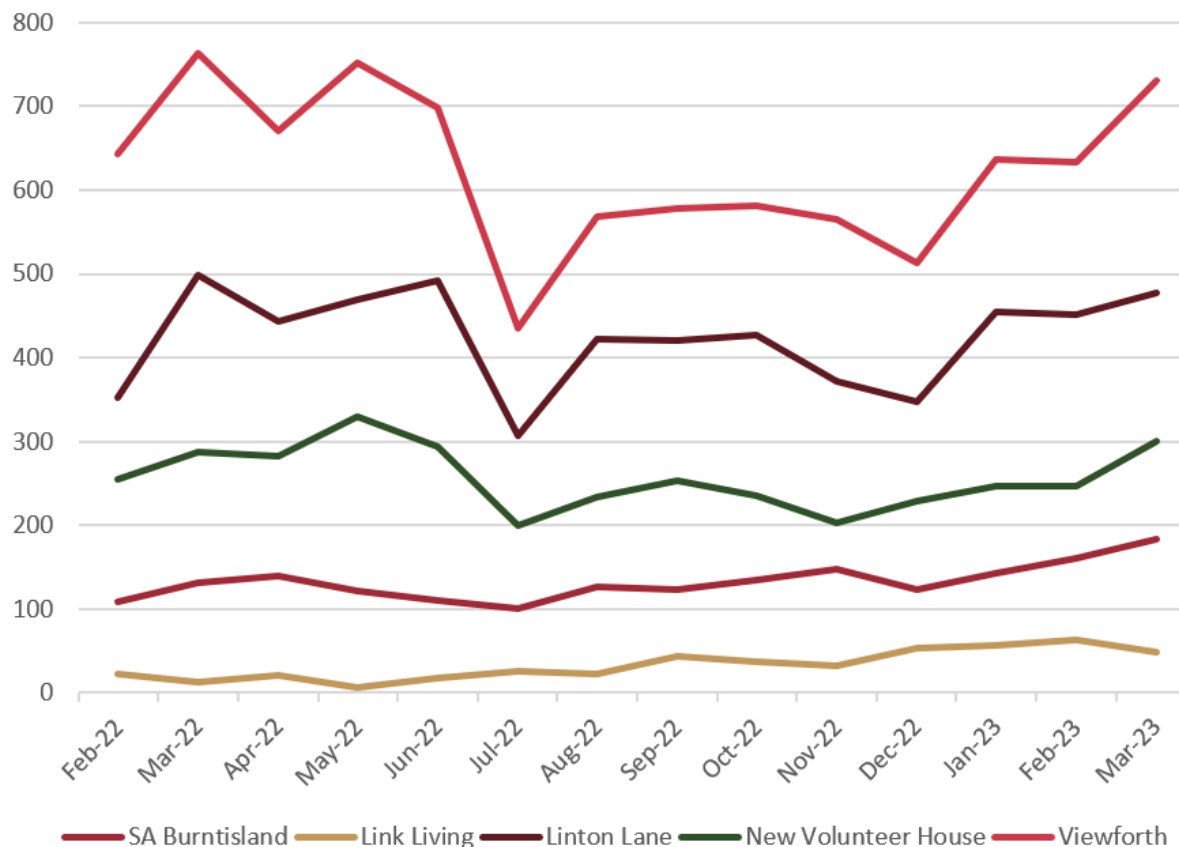
Table showing the total number of adults and children provided with food and the percentage of children in the past 12 months *NB: as the adults and children may be provided with food more than once in the month, this is not a count of the total number of individual adults and children we have helped.*

	ADULTS	CHILDREN	%AGE CHILDREN
Mar-22	2592	1410	35.2%
Apr-22	2374	1278	35.0%
May-22	2540	1445	36.3%
Jun-22	2436	1291	34.6%
Jul-22	1641	779	32.2%
Aug-22	2152	1171	35.2%
Sep-22	2167	1228	36.2%
Oct-22	1855	1086	36.9%
Nov-22	2008	1096	35.3%
Dec-22	2013	1065	34.6%
Jan-23	2385	1209	33.6%
Feb-23	2356	1265	34.9%
Mar-23	2694	1329	33.0%
<b>TOTAL %AGE CHILDREN IN 2023</b>			<b>33.9%</b>

Graph showing the percentage of children being provided with food at each of our distribution points since April 2021



**Graph showing the number of visits to our distribution points since January 2021**



**Table showing the percentage of our visits to our distribution points in the past 12 months**

	SA Burntisland	Link Living	Linton Lane	New Volunteer House	Viewforth
<b>Apr-22</b>	9.0%	1.3%	28.5%	18.1%	43.1%
<b>May-22</b>	7.3%	0.4%	28.0%	19.6%	44.8%
<b>Jun-22</b>	6.9%	1.1%	30.5%	18.2%	43.3%
<b>Jul-22</b>	9.4%	2.4%	28.7%	18.7%	40.7%
<b>Aug-22</b>	9.2%	1.6%	30.8%	17.0%	41.4%
<b>Sep-22</b>	8.7%	3.1%	29.6%	17.9%	40.7%
<b>Oct-22</b>	9.5%	2.6%	30.2%	16.7%	41.1%
<b>Nov-22</b>	11.1%	2.5%	28.2%	15.4%	42.8%
<b>Dec-22</b>	9.7%	4.3%	27.5%	18.1%	40.5%
<b>Jan-23</b>	9.3%	3.6%	29.6%	16.1%	41.4%
<b>Feb-23</b>	10.3%	4.1%	29.0%	15.9%	40.7%
<b>Mar-23</b>	10.5%	2.8%	27.4%	17.3%	42.0%
<b>TOTAL</b>	<b>9.2%</b>	<b>2.5%</b>	<b>29.0%</b>	<b>17.4%</b>	<b>42.0%</b>

Graph showing parcel types provided from each of our distribution points in the previous month

